



SALES MANAGERS & AUCTIONEERS

BIG ENOUGH FOR THE INDUSTRY LEADERS, YET PERSONAL ENOUGH FOR AMERICA'S FARMER.

AMERICA'S AUCTION COMPANY

BOSTON (METHUEN), MASSACHUSETTS - FRIDAY, OCTOBER 4TH AT 9:30 AM



JOB COMPLETION AUCTION
90% RETIREMENT



CONSTRUCTION, UTILITY EQUIPMENT, TRUCKS, TRAILERS, SNOW FIGHTING EQUIPMENT, SNOW TRUCKS, SANDERS, SKID STEERS



BOSTON (BROCKTON), MASSACHUSETTS - SATURDAY, OCTOBER 5TH AT 9:30 AM

JOB COMPLETION AUCTION CONSTRUCTION & SNOW EQUIPMENT AUCTION
~ J. DERENZO COMPANIES ~

IN CONJUNCTION WITH:
 **Saperstein Co.**
Auctioneers & Appraisers

VERY CLEAN SNOW EQUIPMENT, RUBBER TIERED LOADERS, SKID STEERS, TRACTOR LOADER BACKHOES, MOTOR GRADERS, ALL TYPES OF TRUCKS WITH PLOWS, SPARE PLOWS AND BLADES, SUPPORT EQUIPMENT



ALEX LYON & SON SALES MANAGERS & AUCTIONEERS, INC.

2019

7697 ROUTE 31, PO BOX 610, BRIDGEPORT, NY 13030 315-633-2944 FAX: 315-633-8010 LYONAUCTION.COM

AMERICA'S AUCTION COMPANY

BOSTON (METHUEN), MASSACHUSETTS - FRIDAY, OCTOBER 4TH AT 9:30 AM

ADDRESS: 11 Cross Street, Methuen, Massachusetts 01844. **NOTE:** Having past 39 years old, the difficult decision has been made to cut back 90% of the company and maybe enjoy the downtime. **SITE PHONE:** (315) 250-1400 Tony. **MA AUCTION LICENSE:** #295 Paul E. Saperstein Co., Inc. **TERMS & CONDITIONS:** "Cash or Company Check" accompanied by current "Bank Letter of Guarantee", made payable to Alex Lyon & Son. Everything Sells "AS IS, WHERE IS." *The following charges will apply on all purchases:* (1.) For each unit \$30,001.00 and above, a 5.95% administration fee will be assessed when paying with cash or good check. (The standard fee of 8.95% will be assessed when paying with credit card). (2.) For each unit \$1,001- \$30,000, a 10% administration fee will be assessed when paying with cash or good check, and a 13% fee will be assessed when paying with credit card. (3.) For each unit \$0- \$1,000, a 12.5% administration fee will be assessed when paying with cash or good check, and a 15.5% fee will be assessed when paying with credit card. ****Please NOTE: An additional fee may be assessed when bidding online****



FOR BID ONLINE TECHNICAL ASSISTANCE CALL
Proxibid: (855) 636-6461
Nextlot: (919) 361-1111

5 HYDRAULIC EXCAVATORS



KOMATSU PC220LC-2 SN:11999 powered by Cummins diesel engine, equipped with Cab, air, digging bucket, long undercarriage.



KOMATSU PC150LC-3 SN:3503 powered by Cummins diesel engine, equipped with Cab, air, digging bucket, long undercarriage.



VOLVO EC210BLC SN:V11371 powered by diesel engine, equipped with Cab, air, heat, radio, auxiliary hydraulics, hydraulic quick coupler, 36in. Digging bucket w/ hydraulic thumb, long undercarriage.



HITACHI ZX135USZTS SN:7222 powered by diesel engine, equipped with Cab, air, heat, zero tail swing, 30in. Digging bucket w/ hydraulic thumb.



JCB 8045ZTS SN:70755 powered by diesel engine, equipped with Cab, air, heat, front blade, auxiliary hydraulics, zero tail swing, 24in. Digging bucket w/ hydraulic thumb.

HYDRAULIC HAMMER STANLEY HYDRAULIC HAMMER CONCRETE PULVERIZER



BODINE 80/80mm, to fit Cat 320/325, Komatsu PC200/250 and similar size machines.

MULTI SHEAR



BODINE 80/80mm, to fit Cat 320/325, Komatsu PC200/250 and similar size machines.

CARRY DECK CRANE



P & H D851 SN:60001 powered by Cummins diesel engine, equipped with Cab, 8.5 ton capacity, (4) outriggers, 32ft. 4-section boom, swing away JIB, crane smart system, 10.00R15 rubber. Current Certification.

ROBOTIC ARMS

KAWASAKI FS10L SN:9Y0246R0S0S Point to Touch programming, Command and control computer console, set up with a JCB quick coupler.
ASEA SN:N7331-372 Point to Touch programming, command and control computer console.

BRIDGE EQUIPMENT

PAXTON MITCHELL MDL 5100 PEEPER BRIDGE INSPECTION BODY SN:80804 Twin bucket

5 RUBBER TIRED LOADERS



(2) UNUSED CAT 908M powered by Cat C3.3B diesel engine, equipped with EROPS, air, quick coupler, GP bucket, 405/70R20 rubber. Forks Sell Separately.



UNUSED CAT 906M powered by Cat C3.3B diesel engine, equipped with EROPS, air, hydraulic quick coupler, GP bucket. Forks Sell Separately.



MITSUBISHI WS400 SN:3W100530 powered by diesel engine, equipped with EROPS, 1 yard GP bucket.



KOMATSU WA180 SN:A75011 powered by Cummins diesel engine, equipped with EROPS, GP bucket.

CRAWLER TRACTOR



DRESSER TD8G SN:637 powered by Cummins diesel engine, equipped with OROPS, sweeps, rear screen, 6 way blade, long track frame.

ASPHALT ROLLER



BOMAG BW100AD-3 SN:10547 powered by Deutz diesel engine, equipped with ROPS, 27.6in. smooth drum, double drum, vibratory drum, drum drive, water system.

VIBRATORY ROLLER



2012 AMMANN ASC130 SN:2943057 powered by Cummins diesel engine, equipped with EROPS, air, heat, 84in. Smooth drum, vibratory drum, drum drive.

3 SKID STEERS



BOBCAT 773 SN:51901992 powered by diesel engine, equipped with EROPS, auxiliary hydraulics, mechanical quick coupler, GP bucket.

BOBCAT S70 SN:B38V12770 powered by diesel engine, equipped with rollcage, auxiliary hydraulics, mechanical quick coupler, GP bucket. Snowblower, power angle plow, broom, Sell Separately.

GEHL 4840 SN:6530 powered by Isuzu diesel engine, equipped with EROPS, air, heat, high flow auxiliary hydraulics, mechanical quick coupler, 66in. GP bucket, 1,100 hours.

27 SKID STEER ATTACHMENTS

- NEW ROCK, SLAB STUMP REMOVER
- (2) NEW ROOT RAKE
- (3) NEW 90IN. BUCKET
- (16) NEW ATTACH FRAME
- (2) NEW 84IN. FORK EXTENSION
- (2) NEW JBX 4000 48IN. FORKS
- NEW CONCRETE BUCKET

TELESCOPIC FORKLIFTS

JCB 508C SN:3554 4x4, powered by diesel engine, equipped with EROPS, 8,000lb lift capacity.



JCB 407B powered by diesel engine, equipped with EROPS, air, heat, GP bucket.

3 FORKLIFTS

YALE GTG150SBS083 SN:P379191 powered by LP engine, equipped with OROPS, 20,000lb lift capacity.



HYSTER H80XL SN:6625S powered by Perkins diesel engine, equipped with EROPS, heat, 12,000lb lift capacity, 3-stage mast, hydraulic sliding forks, 2,418 hours.

MITSUBISHI FG25N SN:A4BC240615 electric powered, equipped with OROPS, 5,000lb lift capacity.

4 SCISSOR LIFTS

JLG 4394RT SN:0200109088 powered by dual fuel engine, equipped with 43ft. platform height, slide out deck, rough terrain tires.

JLG 260MRT SN:200179679 equipped with 26ft. platform height, slide out deck, outriggers, rough terrain tires.

UPRIGHT SN:21305 electric powered, equipped with 40ft. Platform height.

UPRIGHT TM12 SN:30555 electric powered, equipped with 12ft. Platform height.

AIR COMPRESSOR



SULLAIR 185H SN:185HDPQJD powered by John Deere diesel engine, equipped with 185CFM, trailer mounted.

GENERATOR

CONSOLIDATED POWER 150D8TI SN:4020650 powered by diesel engine, equipped with 150KW.

5 LIGHT PLANTS



2010 WACKER LTC4L SN:5771161 powered by diesel engine, equipped with 4-1,000 watt lightbulbs, trailer mounted.

5 SNOW UTILITY TRACTORS



INGERSOLL RAND SN:343319UB0789 powered by diesel engine, equipped with 4-1,000 watt lightbulbs, trailer mounted.



INGERSOLL RAND SN:343719UC0789 powered by diesel engine, equipped with 4-1,000 watt lightbulbs, trailer mounted.



ALLMAND NLPROC1 SN:2799PR008 powered by diesel engine, equipped with 4-1,000 watt lightbulbs, trailer mounted.

2007 MAGNUM SN:76876 powered by diesel engine, equipped with 4-1,000 watt lightbulbs, trailer mounted.

HAY EQUIPMENT

NEW HOLLAND 276 BALER SN:249318 equipped with kicker.

TRACTOR LOADER

INTERNATIONAL SN:26391088 4x4, powered by diesel engine, equipped with EROPS, front loader w/ GP bucket, 3pt hitch, PTO. Forks Sell Separately.



HOLDER C240 SN:20200904 powered by Kubota diesel engine, equipped with power angle plow, hydraulic sander, snow blower, dump bed, 583 hours.

HOLDER 4.74 SN:20400230 powered by diesel engine, equipped with EROPS, Angle V-plow, hydraulic sander, snowblower, 990 hours.

HOLDER SIDEWALK TRACTOR SN:41255745 equipped with plow, electric sander.

HOLDER SIDEWALK TRACTOR SN:41400318 equipped with power angle plow, electric sander.

HOLDER SIDEWALK TRACTOR SN:41400372 Parts.

SNOW BLOWER TRUCK



SCHMIDT/ WASHAU SN:611621 powered by Cummins front & rear diesel engine, equipped with all wheel steering, hydraulic truck loading chute.

SNOW PLOW TRUCKS

2002 INTERNATIONAL 2674 VN:519664 powered by Cat C12 diesel engine, 380hp, equipped with Allison automatic transmission, power steering, 10ft. Dump body, central hydraulics, plow & wing frame, 425/65/22.5 front tires, 12R22.5 rear tires, dual wheel single axle.

2002 FORD F350 VN:A98404+equipped with power steering, flatbed body, 9ft. Fisher stainless steel plow, 6ft. electric polycaster sander, 74,705 miles.

ROLLBACK TRUCK

1988 MACK MS250P VN:085224 powered by Renault 6 cylinder diesel engine, equipped with manual transmission, power steering, 24ft. Steel rollback body, Braden winch, 32000lb GVWR, 295/75R22.5 tires, dual wheel single axle, 122,107 miles.

DUMP TRUCKS



2003 FORD F550XL VN:199939 powered by 7.3L diesel engine, equipped with automatic transmission, power steering, dump body, central hydraulics, hydraulic Fisher plow, 19.5 tires, dual wheel single axle.



1997 INTERNATIONAL 4900 VN:441608 powered by DT466E diesel engine, equipped with Allison automatic transmission, power steering, dump body, central hydraulics, plow frame, pintle hitch, 12R22.5 tires, tandem axle.

TRUCK TRACTOR



1986 PETERBILT 359 VN:N/A powered by Cat 3406B diesel engine, 425hp, equipped with 18 speed transmission, power steering, 3-line wet system, 36in. Sleeper, dual exhaust, 20,000lb pusher, 44,000lb rears, Hendrickson suspension, full fenders, 11R24.5 tires, triaxle.

LOG SPLITTER TRUCK

1988 CCC S VN:036764 powered by Detroit diesel engine, equipped with 33000# GVWR.



DETACHABLE GOOSENECK TRAILERS



2002 TALBERT VN:20736 equipped with 50 ton capacity, 26ft. Well, hydraulic detach, air ride suspension, 22.5 low pro rubber, air lift third axle, triaxle.



1988 WITZCO RG50 VN:61214 equipped with 50 ton capacity, 22ft. Well, hydraulic detach, spring suspension, new rubber, triaxle.

DUMP TRAILER



1983 DORSEY VN:15928 equipped with 32ft. Aluminum dump body, 2-way gate, electric tarp, 60in. Sides, new 11R24.5 tires, air lift third axle, triaxle.

TAGALONG TRAILERS

1994 EAGER BEAVER 20 TON VN:043747 equipped with 20 ton capacity, 21ft. Deck, 6ft. Beavertail, tandem axle.



2007 DITCH WITCH T9C VN:701560 equipped with 13ft. Deck, fold down ramps, 11,000lb GVWR, tandem axle.

ENCLOSED TAGALONG TRAILER



1998 TOWMASTER VN:N/A equipped with 14ft. Enclosed body, rear swing door, side entry door, single axle.

UTILITY VEHICLE



KAWASAKI MULE powered by gas engine, equipped with EROPS, heat, dump body, pintle hitch, 20 x 10.00-10 tires.

5 CONTAINERS

- (4) 40FT. STORAGE
- 20FT. STORAGE

5 SCRAP RECYCLING EQUIPMENT

- NEW 2 YARD STACKABLE SELF DUMPING HOPPER
- (2) NEW 1.75 CUBIC YARD STACKABLE SELF DUMPING HOPPER
- NEW 1.5 CUBIC YARD STACKABLE SELF DUMPING HOPPER
- NEW 1 CUBIC YARD STACKABLE SELF DUMPING HOPPER

23 SNOW EQUIPMENT

- (10) NEW 93IN. SNOW PUSHER



PROTECH 8FT. SNOW PUSHER

- 8FT. MYERS SANDER
- 6FT. STAINLESS STEEL ICEWAY SANDER
- (3) 9FT. FISHER MINUTE MOUNT PLOW
- (5) 8FT. SNOW KING POWER ANGLE PLOW
- EZ SNOW PLOW
- FUNNEL PLOW

3 ENGINES

- (3) LOMBARDINI DIESEL

4 TRUCK PARTS & ACCESSORIES

- PALLETS OF MISC TRUCK PARTS
- QTY PETERBUILT TRUCK PARTS
- QTY OF TRUCK RIMS
- CAST IRON OIL PAN FOR DETROIT DIESEL

TIRES, NEW & USED

- QTY OF MISC TIRES

BARRIER LIFTER

- BARRIER LIFTER

5 HEATING EQUIPMENT

- MASTER 600K BTU TORPEDO HEATER
- UNIVERSAL 280K BTU HEATER SN:17310569
- HEATSTAR 100K BTU HEATER SN:39140900043
- HEATSTAR INDIRECT HEATER SN:39160920076
- DIRECTOR 3000 INDIRECT HEATER SN:R10505

5 PRESSURE WASHERS

- (5) NEW EASY KLEEN MAGNUM GOLD powered by gas engine, equipped with 4000PSI, 12Volt, 15hp, Hot Water, totally self contained.

61 NEW SUPPORT EQUIPMENT

- (3) NEW MUSTANG LF88 PLATE COMPACTOR
- (4) NEW MUSTANG MP4800 2IN. SUB PUMP
- (2) NEW MUSTANG CV3500 CONCRETE VIBRATOR
- (2) NEW HUSKIE B65 ELECTRIC DEMO HAMMER
- (8) NEW 3 PC. 14IN. PREMIUM DIAMOND BLADES
- (8) NEW 25FT., 800AMP EXTRA HD BOOSTER CABLE
- (6) NEW 2IN. X 50FT. DISCHARGE WATER HOSE
- (4) NEW AUTO DARKENING WELDING HELMET
- (2) NEW HUSKIE 11218SDS HAMMER DRILLS
- (2) NEW STIFF NECK PINTLE HITCHES
- (3) NEW 1/2IN. DRIVE AIR IMPACT WRENCH KIT
- NEW 12V DIESEL FUEL PUMP
- (2) NEW 6PK. 14IN. ABRASIVE BLADES
- (4) NEW 30IN. X 57IN. WELDING TABLE W/SHELF
- (2) NEW 29.5IN. X 90IN. HEAVY DUTY WORK BENCH W/ SHELF
- (2) NEW 1/2 AR500 STEEL COYOTE SHOOTING TARGET
- (2) NEW 3/8IN. AR500 DUELING TREE SHOOTING TARGET
- (4) NEW 3/8IN. AR500 GONG TARGET

42 SUPPORT EQUIPMENT

- (2) PULLMAN HOLT VACUUM
- POWER AMERICAN 3420 HEATED PRESSURE WASHER SN:75443 3 phase, natural gas.
- BIN OF GARDEN SPRAYERS
- PALLET OF MILWAUKEE SAWZALLS
- PALLET OF RYOBI, GRINDERS, AND SAW
- PALLET OF MUD FLAPS
- METAL DESK
- WOOD DESK
- 1IN. AIR IMPACT GUN
- 3/4IN. AIR IMPACT GUN
- KOHLER GENERATOR
- ALEMITE AIR GREASE GUN
- (3) 10 TON JACK STAND
- BOX OF MISC POWER TOOLS
- PORTER POWER
- BANDING MACHINE
- AIR HOSE REEL
- JACK STANDS
- 10 TON CHAIN FALL
- SAW HORSES
- AIR COMPRESSOR powered by gas engine.
- TARGET ROAD SAW
- 3IN. TRASH PUMP
- CONCRETE DRAIN PIPE
- 400LBS SAND BLASTER
- CONVEYOR BELTING
- BJM 43-0320 3IN. TRASH PUMP SN:68893
- OZTEC 2.4OZ VIBRATOR POWER UNIT
- SUMNER 2118 18FT. DUCT JACK SN:8490
- SHARK 505C HOT PRESSURE WASHER SN:H1100-62439
- SHARK 505C HOT PRESSURE WASHER SN:C75850
- 6IN. SEWER PIPES
- SEWER PIPE FITTING
- WATER PIPES
- WATER FITTINGS
- BOLT BINS
- AIR COMPRESSOR HOSES
- JACK HAMMERS
- ONAN GENERATOR

AMERICA'S AUCTION COMPANY

BOSTON (BROCKTON), MASSACHUSETTS - SATURDAY, OCTOBER 5TH AT 9:30 AM

ADDRESS: 354 Howard Street, Brockton, MA 02302. **NOTE:** Having completed several major jobs recently, the corporate decision has been made to dispose of the equipment used on these jobs. **SPECIAL NOTE:** Everything from here is in tip-top shape -P.S. Absolutely No Consignments. **SITE PHONE:** (508) 769-7010 Joe. Co-Managed with Paul E. Saperstein Co., Inc. **MA AUCTION LICENSE:** #295 Paul E. Saperstein Co., Inc. **TERMS & CONDITIONS:** "Cash or Company Check" accompanied by current "Bank Letter of Guarantee", made payable to Paul E. Saperstein Co. Everything Sells "AS IS, WHERE IS." *The following charges will apply on all purchases:* 10% administration fee will be assessed when paying with cash or good check. (The standard fee of 13% will be assessed when paying with credit card). ****Please NOTE: An additional fee may be assessed when bidding online****



BID ONLINE
FOR BID ONLINE TECHNICAL ASSISTANCE CALL
Proxibid: (855) 636-6461
Nextlot: (919) 361-1111

10 SNOW PLOW TRUCKS



2001 INTERNATIONAL 5600I VN:15347 4x4, powered by Cummins ISM diesel engine, equipped with automatic transmission, power steering, Swenson stainless steel sand spreader, front plow & wing plow, 12R22.5 tires, dual wheel single axle.



1995 VOLVO FE VN:474377 powered by Volvo VE D7-230 diesel engine, equipped with automatic transmission, power steering, steel sand spreader, 315/80R22.5 front tires, 11R22.5 rear tires, dual wheel single axle.



1995 FORD L8000 VN:A29064 powered by Cat 6 cylinder diesel engine, equipped with automatic transmission, power steering, stainless steel sand spreader, front plow & wing frame, 12R22.5 tires, dual wheel single axle.

1990 WHITE/ GMC WX XPEDITOR VN:628324

powered by Cummins LTA10 diesel engine, 270hp, equipped with automatic transmission, power steering, steel sand spreader, front plow frame, 11.00R22 tires, dual wheel single axle.

1989 INTERNATIONAL 5070 VN:15299 6x6, powered by Cummins N14 diesel engine, equipped with automatic transmission, power steering, 14ft. Steel sand spreader, front plow, tandem axle.

1989 INTERNATIONAL PAYSTAR 5000 VN:7416 6x6, powered by diesel engine, equipped with 13ft. Stainless steel sand spreader, spring suspension, front plow, tandem axle.

1989 INTERNATIONAL PAYSTAR 5000 VN:15298 6x6, powered by Cummins N14 diesel engine, equipped with Road Ranger 8LL transmission, power steering, 14ft. steel sand spreader, spring suspension, front plow, 445/65R22.5 Front tires, 12R24.5 Rear tires, tandem axle.



1988 MACK RM6884X VN:1078 4x4, powered by Mack 6 cylinder diesel engine, equipped with automatic transmission, power steering, steel sand spreader, plow frame, 12ft. power angle plow, 425/65R22.5 front tires, 12R22.5 rear tires, dual wheel single axle.



1988 MACK RD686P VN:17606 powered by Mack diesel engine, equipped with Maxitorque extended range transmission, power steering, stainless steel sand spreader, front plow frame, wing plow frame, 12R24.5 tires, dual wheel single axle.



1987 OSHKOSH P-2530-SP VN:31797 4x4, powered by diesel engine, equipped with automatic transmission, power steering, Tarrant stainless steel sand spreader, front & wing plow frame, 445/65R22.5 front tires, 12R24.5 rear tires, dual wheel single axle.

65 SNOW EQUIPMENT

2019 WAUSSAU HSP4214HW POLY POWER ANGLE PLOW

2018 WAUSSAU HSP4214HW POLY POWER ANGLE PLOW



2017 WAUSSAU HSP4214HW POLY POWER ANGLE PLOW



(4) 2016 WAUSSAU HSP4214HW POLY POWER ANGLE PLOW with Komatsu loader couplers.

2015 WAUSSAU HSP4214HW POLY POWER ANGLE PLOW



(3) 2014 WAUSSAU HSP4214 POLY POWER ANGLE PLOW with loader couplers.
VALK XW-14PRHD 14FT. POWER ANGLE PLOW with Volvo L150 coupler.



(3) 11FT. POWER ANGLE PLOW truck mount.



(6) FISHER MINUTE MOUNT 2 9FT. POWER ANGLE PLOW steel and stainless steel.



14FT. POWER ANGLE PLOW with Cat IT couplers.



(9) 11FT. POWER FIXED ANGLE PLOW truck mount.



(3) FISHER MINUTE MOUNT 2 8FT. POWER ANGLE PLOW



(2) 13FT. POWER ANGLE PLOW with Cat IT couplers.



(3) 11FT. MANUAL ANGLE PLOW



(2) FISHER HT SERIES 7.5FT. POWER ANGLE PLOW



VIKING 13.5FT. FIXED ANGLE PLOW



(8) 10FT. POWER ANGLE PLOW truck mount.



(2) CAT POWER ANGLE PLOW with IT couplers.



12FT. POWER ANGLE PLOW with Cat IT couplers.
12FT. POWER ANGLE PLOW



18FT. POWER ANGLE PLOW
18FT. MANUAL ANGLE PLOW



(8) STEEL & STAINLESS STEEL SAND SPREADER steel and stainless steel.



QTY OF LOAD QUICK COUPLERS FOR SNOW PLOWS

STRAIGHT FRAME HAUL TRUCK

CAT 769C powered by Cat diesel engine, equipped with Cab, 30 yard capacity, 18-33 28 rubber.

ARTICULATED HAUL TRUCKS



(2) CAT D350E 6x6, powered by Cat diesel engine, equipped with Cab, air, heat, 35 ton capacity.

15 HYDRAULIC EXCAVATORS



CAT 375L powered by Cat diesel engine, equipped with Cab, air, heat, reach boom, digging bucket, long undercarriage.



CAT 330DL powered by Cat diesel engine, equipped with Cab, air, heat, reach boom, digging bucket, long undercarriage.



(2) 2008 CAT 328DLR powered by Cat diesel engine, equipped with Cab, air, heat, reach boom, reduced tail swing, digging bucket, long undercarriage.



(2) CAT 325CLR powered by Cat diesel engine, equipped with Cab, air, heat, reach boom, reduced tail swing, digging bucket, long undercarriage.

CAT 311C powered by Cat diesel engine, equipped with Cab, air, heat, digging bucket.

CAT 302.5 powered by diesel engine, equipped with OROPS, front blade, rubber tracks, digging bucket.

(2) CAT 301.5 powered by diesel engine, equipped with OROPS, front blade, rubber tracks, digging bucket.



KOMATSU PC308LC-8 powered by Komatsu diesel engine, equipped with Cab, air, heat, reach boom, digging bucket, long undercarriage.

TAKEUCHI TB145 powered by diesel engine, equipped with OROPS, front blade, rubber tracks, digging bucket.

(3) TAKEUCHI TB135 powered by diesel engine, equipped with OROPS, front blade, rubber tracks, digging bucket.

RUBBER TIRED EXCAVATORS

2008 CAT M322D powered by Cat diesel engine, equipped with Cab, air, heat, hydraulic outriggers, digging bucket.

CAT M316C powered by Cat diesel engine, equipped with Cab, air, heat, hydraulic outriggers, digging bucket.

9 GRAPPLES

(9) QTY OF VARIOUS SIZE

35 EXCAVATOR BUCKETS

(2) 60IN. DIGGING BUCKET for Cat 345.

60IN. DIGGING BUCKET for Cat 330.

(10) 48IN. DIGGING BUCKET for Cat 345.

(2) 48IN. DIGGING BUCKET for Cat 330.

40IN. DIGGING BUCKET for Cat 345.

(3) 36IN. DIGGING BUCKET for Cat 345.

(2) 36IN. DIGGING BUCKET for Cat 330.

34IN. DIGGING BUCKET for Cat 345.

54IN. DIGGING BUCKET for Cat 330.

(12) QTY OF VARIOUS SIZE DIGGING BUCKETS for Komatsu PC700.

MOTOR GRADER



CAT 140H SN:2ZK00191 powered by Cat diesel engine, equipped with EROPS, moldboard, moldboard, hydraulic sideshift, TIP control, front plow, wing plow.

3 INTEGRATED TOOL CARRIERS

CAT IT62G powered by Cat diesel engine, equipped with EROPS, air, heat, IT arrangement, GP bucket.



CAT IT38G SN:7BS01208 powered by Cat 3126 diesel engine, equipped with EROPS, air, IT arrangement, ride control, 3rd valve hydraulics, hydraulic quick coupler, GP bucket w/ BOCE, 20.5R25 rubber.



CAT IT38G powered by Cat diesel engine, equipped with EROPS, air, heat, IT arrangement, GP bucket.

6 RUBBER TIRED LOADERS



(2) 2016 KOMATSU WA470 powered by Komatsu diesel engine, equipped with EROPS, air, heat, long reach arrangement, GP bucket, L5 rubber.



CAT 950G powered by Cat diesel engine, equipped with EROPS, air, heat, 3rd valve hydraulics, quick coupler, GP bucket.



CAT 938G powered by Cat diesel engine, equipped with EROPS, air, heat, 3rd valve hydraulics, quick coupler, GP bucket.



CAT 924G powered by Cat diesel engine, equipped with EROPS, air, heat, 3rd valve hydraulics, quick coupler, GP bucket.



VOLVO L120 powered by diesel engine, equipped with EROPS, air, heat, 3rd valve hydraulics, quick coupler, GP bucket.

4 CRAWLER TRACTORS

CAT D8R powered by Cat diesel engine, equipped with EROPS, air, heat, Straight blade w/ tilt.

CAT D8L powered by Cat diesel engine, equipped with EROPS, air, heat, SU blade.

CAT D6MLGP powered by Cat diesel engine, equipped with EROPS, air, heat, Straight blade w/ tilt, wide pads.

LIEBHERR 734 powered by diesel engine, equipped with EROPS, air, heat, Straight blade w/ tilt.

CRAWLER LOADER

CAT 939C powered by Cat diesel engine, equipped with EROPS, GP bucket.

4 TRACTOR LOADER BACKHOES



CAT 420DIT SN:BLN11917 4x4, powered by Cat diesel engine, equipped with EROPS, air, heat, IT arrangement, extendahoe, pilot controls, 3rd valve hydraulics, front hydraulic quick coupler, rear quick coupler, GP front bucket w/ BOCE, rear digging bucket, 12.5/80-18 front tires, 19.5L-24 rear tires.

CAT 420DIT 4x4, powered by Cat diesel engine, equipped with EROPS, air, heat, IT arrangement, GP front bucket, rear digging bucket. Forks Sell Separately.



CAT 416CIT SN:1WR01576 4x4, powered by Cat diesel engine, equipped with EROPS, air, IT arrangement, extendahoe, 3rd valve hydraulics, front hydraulic front quick coupler, rear quick coupler, GP front bucket w/ BOCE, 12in. rear digging bucket, 12.5/80-18 front tires, 19.5L-24 rear tires.

CAT 416 4x4, powered by Cat diesel engine, equipped with EROPS, air, heat, GP front bucket, rear digging bucket.

PILE DRIVER/ EXTRACTOR



ICE 44B SN:P75274 4400 in - lbs of force, hoses, with ICE 595E power pack, SN P75274, Cat C15 - 595 HP diesel engine, enclosed/skid mounted.

ASPHALT RECLAIMERS



CMI RS500 powered by Cat 3408 diesel engine, hydrostatic transmission, 28L-26 tires.

CMI RS500 SN:531-164 powered by Cat 3408 diesel engine, hydrostatic transmission, 28L-26 tires.

MILLING MACHINES



ASPHALT ZIPPER SN:100414 powered by John Deere diesel engine, twin disc clutch, loader bucket lip mount, S/A trailer carrier.



ASPHALT ZIPPER AZ-360 SN:100760 powered by John Deere diesel engine, twin disc clutch, loader bucket lip mount, S/A trailer carrier.

3 VIBRATORY ROLLERS



DYNAPAC CA251D SN:58313653 powered by Cummins 6 cylinder diesel engine, equipped with OROPS, 84in. Smooth drum, vibratory drum, drum drive, 28.1-26 diamond tread tires.

DYNAPAC CA251D powered by Cummins 6 cylinder diesel engine, equipped with OROPS, 84in. Smooth drum, vibratory drum, drum drive, 28.1-26 diamond tread tires.



BOMAG BW124DH-3 SN:902581271102 powered by Deutz diesel engine, equipped with OROPS, 47in. Smooth drum, vibratory drum, drum drive.

5 TRENCH ROLLERS



(5) **WACKER** powered by diesel engine, equipped with padsfoot drum, vibratory drum, double drum, drum drive.

4 SKID STEERS

CAT 236 powered by Cat diesel engine, equipped with rollage, auxiliary hydraulics, mechanical quick coupler, GP bucket.



BOBCAT S70 powered by diesel engine, equipped with rollage, auxiliary hydraulics, mechanical quick coupler.



BOBCAT 463 powered by diesel engine, equipped with rollage, auxiliary hydraulics, mechanical quick coupler, hydraulic clamping bucket.
BOBCAT 463 Parts machine.

3 TELESCOPIC FORKLIFTS

CAT 1055C 4x4, powered by Cat diesel engine, equipped with EROPS, air, heat, 10,000lb lift capacity, 55ft. Reach height, front stabilizers.

LULL 844C-42 SN:18340 4x4, powered by diesel engine, equipped with OROPS, 8,000lb lift capacity, 42ft. Reach height, transverse carriage, 10.00-24 tires.



LULL 6K-37 SN:17215 4x4, powered by John Deere diesel engine, equipped with OROPS, 6,000lb lift capacity, 37ft. Reach height, 18.00-24 tires.

BOOM LIFT



GENIE S60 SN:7276 4x4, powered by Deutz diesel engine, equipped with 60ft. Platform height, straight boom, 500lb lift capacity, IN385/65D19.5 tires

5 SCISSOR LIFTS



JLG 2630ES SN:200134281 electric powered, equipped with 26ft. Platform height, slide out deck, 500lb lift capacity.



(3) **JLG 1930ES** electric powered, equipped with 19ft. Platform height, slide out deck, 500lb lift capacity.



MEC 220AM electric powered, equipped with 20ft. Platform height, slide out deck, 500lb lift capacity.

6 AIR COMPRESSORS



LEROI SN:3515X565 powered by Isuzu diesel engine, equipped with 185CFM, trailer mounted.
(5) QTY OF PARTS.

GENERATORS



AIRMAN SDG25S SN:133A30185 powered by Isuzu diesel engine, equipped with 25KW, trailer mounted.



AIRMAN SDG25S SN:1233A01137 powered by Isuzu diesel engine, equipped with 25KW, trailer mounted.

3 LIGHT PLANTS



WACKER VN:B000260 powered by diesel engine, equipped with 4-1,000 watt lightbulbs, 6KW, trailer mounted.



MAGNUM MLT3060MMH SN:61354 powered by diesel engine, equipped with 4-1,000 watt lightbulbs, 6KW, trailer mounted.



ALLMAND powered by diesel engine, equipped with 4-1,000 watt lightbulbs, 6KW, trailer mounted.

ARROW/MESSAGE BOARD



DOT-SIGN CHANGEABLE MESSAGE BOARD SN:513307 single axle.

3 SWEEPERS



1990 FORD CF7000 VN:M01461 powered by 6.6 liter diesel engine, equipped with automatic transmission, power steering, Elgin Crosswind Series G sweeper body, SN:G416D, 4 cylinder diesel engine, 32000# GVWR, 11R22.5 tires, dual wheel single axle, 7,000 miles, 1,433 hours.



(2) ELGIN VN:N/A powered by 4 cylinder diesel engine.

10 UTILITY TRUCKS

2008 FORD F350XL VN:C69265 powered by Powerstroke V8 diesel engine, equipped with automatic transmission, power steering, super cab, Reading utility body, LT275/70R18 tires.

2008 FORD F350XL VN:C69528 powered by Powerstroke V8 diesel engine, equipped with power steering, utility body.

2006 FORD F350XL VN:B57489 powered by Powerstroke V8 diesel engine, equipped with automatic transmission, power steering, utility body, dual wheel single axle.

2006 FORD F350XL VN:B40416 powered by Powerstroke V8 diesel engine, equipped with automatic transmission, power steering, utility body.

2004 FORD F350XL VN:50118 powered by Powerstroke V8 diesel engine, equipped with automatic transmission, power steering, utility body.



2004 FORD F350XL VN:C96094 4x4, powered by Powerstroke V8 diesel engine, equipped with automatic transmission, power steering, super cab, Knapheide utility body, LT265/75R16 tires.

2004 FORD F350XL VN:C52054 powered by Powerstroke V8 turbo diesel engine, equipped with automatic transmission, power steering, crew cab, utility body, dual wheel single axle.

2003 FORD F350XL VN:D65276 powered by Powerstroke V8 turbo diesel engine, equipped with automatic transmission, power steering, utility body.



1999 FORD F350 VN:C70575 powered by Powerstroke V8 diesel engine, equipped with automatic transmission, power steering, utility body, LT235/85R16 tires, dual wheel single axle.



2004 FORD F250XL VN:C39143 4x4, powered by Powerstroke V8 turbo diesel engine, equipped with automatic transmission, power steering, utility body, LT265/75R15 tires, dual wheel single axle.

STAKE TRUCK



2000 FORD F450XL VN:11580 powered by diesel engine, equipped with automatic transmission, power steering, stake body, dual wheel single axle.

4 SERVICE TRUCKS



2008 FORD F750 VN:691374 powered by Cat diesel engine, equipped with automatic transmission, power steering, super cab, Maintainer body with 10000 Series crane, air compressor, covered body, 11R22.5 tires, dual wheel single axle.

2005 PETERBILT 335 VN:885777 powered by Cat C7 diesel engine, equipped with Eaton Mid Range 6 speed transmission, Maintainer body with Mdl 3824 crane, Lincoln Ranger 305G welder, air compressor, 11R22.5 tires, dual wheel single axle.



2004 PETERBILT 330 VN:835261 powered by Cat C7 diesel engine, equipped with Eaton Mid Range 6 speed transmission, Maintainer body with crane, Lincoln Ranger 305G welder, air compressor, covered body, 10R22.5 tires, dual wheel single axle.



1987 INTERNATIONAL PAYSTAR 5000 VN:N/A 4x4, powered by diesel engine, equipped with Road Ranger diesel engine, power steering, 445/65R22.5 tires, front plow frame - no piston, dual wheel single axle.

WATER TRUCK



1985 INTERNATIONAL PAYSTAR 5000 VN:A14721 6x6, powered by 6 cylinder diesel engine, equipped with automatic transmission, power steering, tank w/ 4 cylinder diesel engine driven pump, hose reel, 385/65R22.5 tires, tandem axle.



2001 STERLING M6500 VN:J40469 powered by Cat 3126 diesel engine, Eaton Mid Range 6 speed transmission, Service body with crane, Miller welder, IMT air compressor, 11R22.5 tires, dual wheel single axle.

FLATBED TRUCK



1982 INTERNATIONAL 1824 VN:B14231 4x4, powered by gas engine, equipped with front plow frame, dual wheel single axle.

TANKER TRUCK



1986 INTERNATIONAL F2574 VN:A67729 powered by Cummins diesel engine, equipped with power steering, stainless steel tank, 44,000lb rears, 11R22.5 tires, tandem axle.



FREIGHTLINER VN:N/A equipped with flatbed body, dual wheel single axle, no engine, PARTS.

5 CAB & CHASSIS

2010 FORD F350XL VN:B09841 powered by Powerstroke V8 diesel engine, equipped with automatic transmission, power steering, super cab, dual wheel single axle.



1980 KENWORTH W900 VN:N/A powered by GM 6V92TT diesel engine, equipped with To955ALL transmission, 11R24.5 tires, tandem axle.

FUEL/LUBE TRUCK



1990 OSHKOSH VN:39177 powered by Cummins 6 cylinder diesel engine, equipped with Road Ranger 9 speed transmission, power steering, 22,000lb fronts, 46,000lb rears, 445/65R22.5 tires, tandem axle. Comes with a new spare engine.



2002 STERLING M8500 VN:J51122 powered by Mercedes MBE900 diesel engine, equipped with automatic transmission, power steering, Boston Tank with ticket printer, 11R22.5 tires, dual wheel single axle.

SWITCH & GO TRUCK



2017 FORD F550XLT VN:A07560 4x4, powered by Powerstroke 6.7L turbo diesel engine, equipped with automatic transmission, power steering, Switch-N-Go Mdl 13S-620HD-15H body, sn S4999 with Parker winch, chip body with barn door gate, front plow frame, 245/70R19.5 tires, dual wheel single axle.



Like us on Facebook

4 TRUCK TRACTORS

2005 MACK CNH613 VN:4039 powered by Mack 12L E7 series diesel engine, equipped with Road Ranger 18 speed transmission, power steering, 2-line wet system, air slide 5th wheel, 46,000lb rears, air ride suspension, 11R24.5 tires, PA wheels, tandem axle.



2001 KENWORTH T800 VN:889214 powered by Cat C15 diesel engine, 475hp, equipped with Road Ranger 18 speed transmission, power steering, 2-line wet system, air slide 5th wheel, 44,000lb rears, 11R24.5 tires, tandem axle.



2000 AUTOCAR ACL64BT VN:520993 powered by Cummins N14 diesel engine, 435hp, equipped with Road Ranger 8LL transmission, power steering, 2-line wet system, air slide 5th wheel, 44,000lb rears, 11R24.5 tires, tandem axle.

1998 KENWORTH W900 VN:775826 powered by Cat 3406E diesel engine, equipped with Road Ranger 8LL transmission, air slide 5th wheel, 2 line wet system, air ride suspension, 11R24.5 tires, tandem axle.

8 DUMP TRUCKS



2011 INTERNATIONAL 7400 VN:341532 powered by Maxxforce 9 diesel engine, equipped with Road Ranger 10 speed transmission, power steering, 10ft. steel dump body, bed mounted sand spreader, plow frame, 11R22.5 tires, dual wheel single axle.



2001 INTERNATIONAL 2674 VN:360327 powered by Cummins N14 diesel engine, equipped with Road Ranger 8LL transmission, power steering, steel dump body, Front plow and wing plow, 11R24.5 tires, tandem axle.



2001 INTERNATIONAL 4900 VN:396591 powered by DT466E diesel engine, equipped with automatic transmission, power steering, 10ft. Steel dump body, front plow frame, 12R22.5 tires, dual wheel single axle, 47,159 miles.



2000 INTERNATIONAL 4900 VN:334644 powered by DT466E diesel engine, equipped with automatic transmission, power steering, 10ft. Steel dump body, front plow frame, 11R22.5 tires, dual wheel single axle, 43,511 miles.

1986 INTERNATIONAL 1854 VN:A27087 4x4, powered by 7.6 L diesel engine, equipped with automatic transmission, power steering, 10ft. Steel dump body, 11R22.5 tires, dual wheel single axle.



1980 INTERNATIONAL 2554 VN:A20991 powered by 6 cylinder diesel engine, equipped with automatic transmission, power steering, 10ft. Steel dump body, front plow frame, 12R22.5 tires, dual wheel single axle.



2015 FORD F550XLT VN:D11371 4x4, powered by Powerstroke 6.7L turbo diesel engine, equipped with automatic transmission, super cab, power steering, Brute rear of cab aluminum tool boxes, Crysteel EZ Tipper aluminum dump body, front plow frame, 245/70R19.5 tires, dual wheel single axle.



2004 STERLING L8500 VN:M81862 powered by Cat 3126 diesel engine, equipped with Road Ranger 8LL transmission, power steering, 10ft. Steel dump body, front plow & wing plow, 12R24.5 tires, PA wheels, dual wheel single axle.

7 PICKUP TRUCKS

2004 FORD F250XLT VN:A89756 4x4, powered by gas engine, equipped with automatic transmission, power steering, super cab.

2007 FORD F150XLT VN:A73964 powered by Triton gas engine, equipped with automatic transmission, power steering, super cab.



2007 FORD F150 VN:B41110 powered by 5.4L Triton gas engine, equipped with automatic transmission, power steering, super cab, bed cover.



2004 FORD F150XL VN:B15444 powered by gas engine, equipped with automatic transmission, power steering, super cab.

2004 FORD F150XLT VN:H48724 powered by 5.4L Triton gas engine, equipped with automatic transmission, power steering, super cab.



2010 CHEVY SILVERADO Z71 VN:210021 4x4, powered by V8 gas engine, equipped with automatic transmission, power steering, extended cab, toolbox, LT275/65R18 tires.
2007 CHEVY SILVERADO VN:156618 4x4, powered by gas engine, equipped with automatic transmission, power steering, crew cab.

DETACHABLE GOOSENECK TRAILER



1998 TALBERT T3DW-50SA-HRG-1-T1 VN:16659 equipped with 50 ton, non ground bearing, dropside, air ride suspension, 255/70R22.5 tires, air lift third axle, triaxle.

DUMP TRAILERS



2012 RHODES VN:432395 equipped with 30ft. steel body, single point suspension, 11R24.5 tires, PA wheels, tandem axle.



1999 BENSON VN:SS0670 equipped with 30ft. steel body, barn door tail gate, single point suspension, 11R24.5 tires, tandem axle.

TANKER TRAILER



1983 WALKER VN:7114 equipped with 5,700 gallon stainless steel tank, tandem axle.

6 TAGALONG TRAILERS



2013 SOUTH AG PTD09 VN:100015 equipped with rear ramps, ST235/80R16 tires, tandem axle.



2006 TOWMASTER T-12T VN:163477 equipped with tilt deck, LT235/85R16 tires, tandem axle.



1997 ROGERS TAG21 VN:R22645 equipped with rear ramps, tandem axle.



1994 EAGER BEAVER 20HALX VN:43430 equipped with 20 ton capacity, rear ramps, air brakes, tandem axle.



TRAILING VN:N/A equipped with rear ramps, tandem axle.



VN:N/A equipped with rear ramps, triaxle.

TRUCK SCALE



WEIGH-TRON 100 TON PORTABLE 70FT. X 11FT.

WATER TANK



HIGHLAND INDUSTRIES 600 GALLON

EQUIPMENT PARTS



QTY OF ASSORTED SIZE LOADER TIRE SNOW CHAINS



AUCTION CALENDAR

ALL THE FOLLOWING AUCTIONS WILL BE AVAILABLE TO



1. Saturday, September 21: **LAS VEGAS, NEVADA:** Very Late Model Rental Construction Equipment Auction. Large Quantity Booms, Scissor Lifts, Telescopic Forklifts, Hydraulic Excavators, Motor Graders, Tractor Loader Backhoes, Trucks, Trailers, Attachments & Large Quantity Support Equipment.
2. Monday, September 23 (**NEW DAY OF THE WEEK**): **DALLAS (FT. WORTH), TEXAS:** Very Late Model Cat, John Deere, Komatsu Construction Equipment, Boom & Scissor Lifts, Telescopic Forklifts, Air Compressors, Generators, Welders, All Types Trucks & Trailers. Over 30 Late Model Mack, Peterbilt and Kenworth Truck Tractors.
- 3-4. Thursday, September 26 & Friday, September 27: **EVANSVILLE, ILLINOIS:** 2-Day Estate Auction, Complete Liquidation. Oil Rig, Vacuum Trucks, Oil Related Equipment and Full Line of Construction Equipment, Trucks & Trailers. Real Estate.
5. Friday, September 27: **QUERETARO, MEXICO: ONLINE ONLY AUCTION.** Late Model Cat, Case, John Deere, Volvo Construction Equipment, Aerial Lifts, Forklifts, Trucks and Trailers..
6. Saturday, September 28: **ATLANTIC CITY, NEW JERSEY:** Large Rental Fleet Equipment Auction. Very Late Model Construction Equipment, Aerial Lifts, Forklifts, Air Compressors, Welders, Generators, Truck Tractors, Dump Trucks, Water & Service Trucks, Pickups, SUVs, Equipment Trailers, Attachments and Support.
7. Sunday, September 29: **HOWELL TOWNSHIP, NEW JERSEY:** Complete Retirement Liquidation of One of The Finest Collections of Cars and Small Trucks In America. Plus Over 1,000 Lots of Collectible Signs, Real Toys and Special Items to Include Gas Pumps and Much More.
8. Friday, October 4: **METHUEN, MASSACHUSETTS:** 2 Auctions in 1 Day. Job Completion Auctions. Construction Utility Equipment, Trucks, Trailers, Support and Snow Fighting Equipment, Snow Trucks, Sanders, Skid Steers.
9. Saturday, October 5: **BOSTON, MASSACHUSETTS:** Very Clean Snow Equipment, Rubber Tired Loaders, Skid Steers, Tractor Loader Backhoes, Motor Graders, All Types of Trucks with Plows, Spare Plows and Blades, Support Equipment.
10. Thursday, October 10 (**NEW DATE**): **PARKERSBURG, WEST VIRGINIA:** Late Model Cat, Komatsu Construction & Oilfield Equipment, Forklifts, Skid Steers, Dump Trucks, Truck Tractors, Attachments. **HIGHLIGHTS:** (9)Articulated Haul Trucks: (2)2017-2015 Cat 745C, (2)2015 Komatsu HM300, (3)2014 Volvo A40F, (16)Crawler Tractors: (6)Cat D6TLGP, (3)Cat D6NGLP(winch), (3)Cat D7E(winch), (2)2018-2014-2013 Cat D6KLG, (13)Hydraulic Excavators: (2)Cat 336FL, Cat 320F, Komatsu PC360LC, 2015 JD 290GLC, (2)JD 250GLC, (2)JD 210GLC.
11. Friday, October 11: **WILKES-BARRE, PENNSYLVANIA:** Very Large Late Model Snow & Construction Equipment Auction. Primarily Late Model: (10)Cat 926M, Cat 924K, 2019 Cat 218M, (6)Cat 908M, (3)Cat 906M, (4)2019-(14)2018 Cat 262D, (8)2018 Cat 272D, 2019-2018-2017 Cat 259D, (4)2018-(3)2017 Cat 289D, Cat 312E, (2)Cat 308E, Cat 305ECR, PLUS Cat Rollers, Telescopic Forklifts, Air Compressors, Light Plants, Large Quantity Snow Plows, Pickups, Attachments and Support.
12. Saturday, October 12: **CHICAGO, ILLINOIS:** Very Large Late Model Snow & Construction Equipment Auction. **HIGHLIGHTS** Include: (15)Late Model Rubber Tired Loaders, (25)Late Model Skid Steers, Hydraulic Excavators, Tractor Loader Backhoes, (6)Dump Trucks, (10)Pickups w/Plows, (12)Salt Trucks, (6)Truck Tractors, (2)Box Trucks, Snow Plows, Snow Equipment, Plus Support Equipment, Large Quantity Attachments..
13. Tuesday, October 15: **WATERTOWN, NEW YORK:** Real Estate, Lumber, Logs, Storage Trailers, Large Quantity of Tires.
14. Thursday, October 17: **PAWLET, VERMONT:** Job Completion of Late Model Cat, Komatsu, John Deere Construction Equipment, Aerial Lifts, Forklifts, Aggregate, Concrete Equipment, Service & Pickup Trucks. **HIGHLIGHTS:** 2007 Conoco 11-yard Batch Plant, (7)2002-2001 Advanced Front Discharge Mixers, 2009 Fintec Cone Crusher(track), 2009 Fintec 1107 Mobile Jaw Crusher, 2009 Fintec 542 Mobile Screening Plant, 2009QFL Mobile Track Stack, 2008 Powerscreen Chieftain 3-Deck Washer/Dry Conveyor, 2008 Finemaster, Thomas 400 Box Screed, (3)JD 400D 40T Articulated Truck..
15. Friday, October 18: **KEENE, NEW HAMPSHIRE:** Complete Liquidation Retirement Auction. D&L Thomas and Thomas Drilling Corp., Over Half a Century in Business. The Quality is Here! **HIGHLIGHTS:** (16)Hole Hammers, (15)Air Compressors, Pickups, Containers.
16. Saturday, October 19: **GROVELAND, MASSACHUSETTS:** Major Job Completion Auction. Late Model Cat, Komatsu, John Deere Construction Equipment, Trucks, Trailers, Plus Large Quantity Top-of-the-Line Support & Attachments..
17. Friday, October 25: **CLEVELAND, OHIO:** Secured Party and Job Completion of Late Model Construction Equipment, Utility Equipment, Booms, Scissors, Forklifts, Truck Tractors, Dump Trucks, Service Trucks, Flatbeds, Pickups. All Types of Trailers and Support Equipment.

18. Saturday, October 26: **NEW DATE- PLYMOUTH, MASSACHUSETTS:** Snow & Construction Equipment to Include Rubber Tired Loaders, Skid Steers, Hydraulic Excavators, Light Plants, Generators, Air Compressors, Plus Full Line-up of Snow Equipment Including New & Used Attachments. **HIGHLIGHTS:** (2)Cat 908M, (2)Cat 906M, (2)Case 521F, (2)Case 321F, (2) Cat 420F, Quantity New Snow Plows.
19. Sunday, October 27: **ELLENVILLE, NEW YORK:** Retirement Auction. Electrical Contracting Trucks, Light Construction & Utility Equipment, Aerials, Trucks, Complete Line of Unused Support Equipment.
20. Tuesday, October 29: **ORLANDO (KISSIMMEE), FLORIDA:** Large Rental Return Auction. **HIGHLIGHTS:** Construction Equipment, Forklifts, Large Quantity Aerial Lifts, Attachments, Support, Trucks, Trailers, Tagalongs and more.
21. Wednesday, October 30: **FRESNO, CALIFORNIA:** Large Job Completion of Several Major Jobs In Central California. **HIGHLIGHTS:** Cat Motor Scrapers, Motor Graders, Hydraulic Excavators, Rubber Tired Loaders, Tractor Loader Backhoes, Skid Steers, Telescopic Forklifts, Attachments, Truck & Tractors.
22. Saturday, November 2: **BOSTON, MASSACHUSETTS:** Job Completion Auction of Construction, Utility Equipment, Aerial Lifts, Forklifts, Air Compressors, Generators, Water Pumps, Light Plants, Large Quantity Support, Trucks & Trailers.
23. Monday, November 4: (**NOTE NEW DAY**) **HOUSTON, TEXAS:** Rental Fleet Construction Equipment, Utility and Earthmoving Equipment, Aerials, Truck Tractors, Dump Trucks, Utility Trucks, Trailers, Attachments and Support.
24. Saturday, November 9: **SCRANTON, PENNSYLVANIA:** Large Liquidation Retirement Auction. All Types of Trucks, Trailers, Shop Equipment, Enormous Amount of Non-Running Trucks(parts) & Various Parts. Large Multi-Parcel Real Estate Auction & Support Accessories.
- 25-26. Wednesday, November 13, Thursday, November 14: **MILLINOCKET, MAINE:** 2-Day Auction. One of the Largest Well-Run, Family-Owned Logging Companies in America. Major Downsizing of Equipment and Vehicles (The equipment, trucks and trailers are in number 1 shape and everything has been maintained the best) Very Large Quantities Log Skidders, Forwarders, Log Loaders, Delimiters, Feller Bunchers, Hydraulic Excavators, Yard Loaders, Motor Graders, Rubber Tired Loaders, Tractor Loader Backhoes, Very Large Group Truck Tractors, Logging Trailers, Large Group Pickups, Service Trucks, Complete Shop, Enormous Amount New Parts, Tools, Shop Equipment, Real Estate, Logging Camps and More.
27. Friday, November 15: **SYRACUSE, NEW YORK:** Complete Liquidation Large Fabricating & Welding Company. All Types of Fabricating Machines, Welders, Welding Equipment, Benders, Late Model Cranes, Telescopic Forklifts, Warehouse Forklifts, Very Large Quantity Support Equipment to be Found in a Company of This Size.
28. Saturday, November 16: **MONTREAL, CANADA:** Late Model Cat, Komatsu, John Deere, Volvo Construction Equipment, Utility Equipment, Attachments, Support, All Types of Trucks and Trailers.
29. Sunday, November 17: **MIDDLETOWN, NEW YORK:** Light Construction, Landscape and Snow Equipment, Attachments & Support.
30. Thursday, November 21: **OKLAHOMA CITY, OKLAHOMA:** Late Model Construction and Agricultural Equipment, Forklifts, Aerials, Trucks, Trailers, Attachments, Support..
31. Friday, November 22: **BARNESVILLE, OHIO:** Very Large Late Model Cat, Komatsu, John Deere, Case Construction Equipment, Truck Tractors, Late Model Dump Trucks, Support Equipment.
- 32-33. Monday, November 25 & Tuesday, November 26: **TORONTO, CANADA:** 2-DAY AUCTION: Late Model Agricultural Tractors (John Deere, Case, IH, Ford New Holland), Implements, Light Construction Equipment, Attachments, Trucks & Trailers, New & Used Support. It's Big!
34. Saturday, December 28: **ALBANY, NEW YORK:** Annual Ford-New Holland Equipment Auction. Very Late Model New Holland, John Deere, Cat, Komatsu Construction and Utility Equipment, Forklifts, Aerial Lifts, Trucks, Trailers, Attachments & Support.
35. DTBA: **MANCHESTER, NEW HAMPSHIRE:** Rental Acquisition Auction of Late Model Rental Fleet Utility Equipment, Support, Attachments.
36. DTBA: **RACINE, WISCONSIN:** Late Model Construction Equipment, Aerial Lifts, Forklifts, Trucks, Trailers, Support & Attachments.
37. DTBA: **SAN ANGELO, TEXAS:** Rentals, Rentals, Construction Utility Equipment, Truck Tractors, Dump Trucks, Pickups, Service Trucks, Attachments, Support Plus A Fine Line-up of Nice Rental Fleet Equipment as New as 2018.

MAIN OFFICE

315.633.2944 • 315.633.2872 • 315.633.9544
EVENINGS: (315) 637-8912, FAX: (315) 633-8010

BRANCH OFFICES

ATLANTA, GA	770.537.7386	MOBILE, AL	251.510.1538
BRATTLEBORO, VT	802.490.7894	NASHVILLE, TN	615.922.5197
CHICAGO, IL	312.724.5474	NEW LONDON, CT	860.924.7735
COLUMBUS, OH	614.254.5596	OKLAHOMA CITY, OK	405.438.3188
DALLAS, TX	972.725.7761	PARKERSBURG, WV	304.699.3050
DENVER, CO	515.414.2868	RACINE, WI	262.886.2778
DES MOINES, IA	720.277.0263	ST. LOUIS, MO	314.570.4127
FORT WORTH, TX	817.807.2761	TAMPA, FL	813.777.3273
HARRISBURG, PA	717.836.0919	WASHINGTON, DC	202.888.6003
HOUSTON, TX	832.450.3910	MONTREAL, CA	514.949.7500
LAS VEGAS, NV	702.475.4992	OTTAWA, ON	514.916.4656

FOLLOW US:   

Warranties Available On Late Model Equipment from:



CONTACT: Christine Julka
DIRECT: 315-256-0498
OFFICE: 866-662-0995
www.adiagency.com

FINANCING AVAILABLE FOR PRE-APPROVED PURCHASERS: You must have prior written approval!

PATRIOT FINANCIAL LLC: Your one stop shop for all of your auction and equipment needs. For immediate or pre-auction approval please call Customer Service at 866-633-6003 or you may apply on line with our secure site at www.patriotfinancial.com. You may also visit us at certain auctions to get your on-site approval. We do 100% financing, with no age restrictions and our minimum loan amount is \$5,000.00. We welcome new start-up business.

SMART BUSINESS CREDIT & LEASING: For instant credit approvals, contact Customer Service at 800.798.6862, or visit our on-site trailer at select auctions. Also available is a secure online application: www.Smartbusinesscredit.com 100% financing or leasing & customized financial packages available (\$10,000 minimum).

SALES TAX: All sales are subject to sales tax.

SALES TAX EXEMPTIONS: Buyers with a VALID exemption certificate are not required to pay sales tax for equipment and miscellaneous, but MUST present a copy of their certificate at time of registration at EACH SALE.

EXPORTERS: If you take possession of your purchase in the United States, you must pay sales tax. You must provide the following in order not to be charged: Bill of Lading - All export purchases must be removed by a trucking company. The trucking company will provide a Bill of Lading with the purchases listed.

NOTE: No items will be released without this document or you may pay tax and be reimbursed once the Bill of Lading or a Dock Receipt is received.

MOTOR VEHICLES AND TRAILER EXEMPTIONS: Specific for each state. Please call office for exemption details.



7697 ROUTE 31, PO BOX 610
BRIDGEPORT, NY 13030

ADDRESS SERVICE REQUESTED

PRESORT
FIRST CLASS
U.S. POSTAGE
PAID
ROCHESTER, NY
PERMIT No. 944

All information contained in this brochure was derived from sources believed to be correct, but not guaranteed. We shall not be held liable for any typographical errors or inaccuracies in the content of this brochure. All announcements made day of sale supercede any printed material.



PLEASE SCAN
QR CODE
FOR UP-TO-DATE
CALENDAR AND
EQUIPMENT LISTS

BOSTON (METHUEN), MASSACHUSETTS

FRIDAY, OCTOBER 4TH AT 9:30 AM JOB COMPLETION AUCTION

90% RETIREMENT

CONSTRUCTION, UTILITY EQUIPMENT, TRUCKS, TRAILERS, SNOW FIGHTING
EQUIPMENT, SNOW TRUCKS, SANDERS, SKID STEERS



BOSTON (BROCKTON), MASSACHUSETTS

SATURDAY, OCTOBER 5TH AT 9:30 AM JOB COMPLETION AUCTION

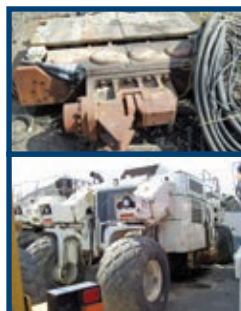
CONSTRUCTION & SNOW EQUIPMENT AUCTION

~ J. DERENZO COMPANIES

IN CONJUNCTION WITH:



VERY CLEAN SNOW EQUIPMENT, RUBBER TIRED LOADERS, SKID STEERS,
TRACTOR LOADER BACKHOES, MOTOR GRADERS, ALL TYPES OF TRUCKS
WITH PLOWS, SPARE PLOWS AND BLADES, SUPPORT EQUIPMENT



315.633.2944

lyonauction.com

lyonauctionlive.com

lyonmexico.com