

1440 COWPATH RD. • HATFIELD, PA 19440
215/361-9099 • Fax: 215/361-9212
www.hunyady.com



`17 CAT CB64B



`14 CAT 289D & `16 CAT PC310B
(SOLD SEPARATELY)



`17 MECALAC 8MCR

PRE-SORTED
FIRST CLASS MAIL
US POSTAGE
PAID
HAVERTOWN, PA
PERMIT #45



ABSOLUTE AUCTION

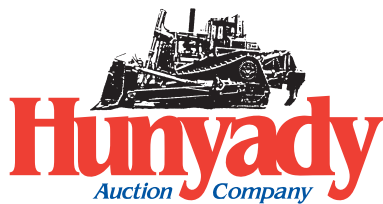
COMPLETE LIQUIDATION



THURSDAY, MAY 2, 2019 - 9:00AM
Flemington, New Jersey

`14 ROADTEC RX-600E-4
AND `16 ROADTEC RP-195E

NEVER A BUYER'S PREMIUM!



Online Bidding | Powered By: **proxibid**

Please visit our website at
www.hunyady.com

Full Photo Library Available

Notice: Hale Built is a 38-year milling and paving firm in Flemington, NJ, performing award-winning installations in both New Jersey and Pennsylvania. Glen Hale has chosen to close the milling and paving operation and pursue his real estate endeavors. All items in this auction are owned by Hale Built and will sell at Absolute Auction, without minimums, reserves, or buyer's premiums!

Auctioneer's Note: This is one of the finest spreads of late model, low hour paving and milling equipment at auction in many years. All equipment has been stored under roof, meticulously maintained and has been prepped for the season and is ready to go to work today! Several pieces have the balance of manufacturer's warranty available for transfer. Please do not miss this opportunity to attend this auction, live or online, of this impressive lineup of equipment and trucks.

Location: The auction will be held at the Hale Built yard and office facility, 165 River Road, Flemington, New Jersey 08822.

Directions: FROM INTERSTATE 78: Follow Route 31 South approximately (10) miles to River Road on left. Continue to auction site in right.

FROM US ROUTE 202, FLEMINGTON CIRCLE: Proceed to Route 31 North and follow approximately (3) miles to River Road on right. Continue to auction site in right.

Online Bidding: Live internet bidding will be provided by Proxibid. Proxibid will charge an Internet Service Provider Fee of 5% to the successful internet bidder for items over \$10,000 and 10% for items \$10,000 and under, for each lot purchased on-line. All interested internet bidders are required to register w/Proxibid 24 hours prior to the auction at www.proxibid.com/hunyady or call 877-505-7770.

Terms: Payment in full is required on sale day by cash, certified funds, or check with a bank letter of guarantee. Sample letter of guarantee: "We hereby guarantee the payment of our customer _____ written on his account up to _____ dollars for purchases at your auction sale on May 2, 2019". All guaranteed checks should be made payable to Hunyady Auction Co.

Sales Tax: Pursuant to Publication ANJ-3, the State of New Jersey considers this an isolated sale and therefore no sales tax will be charged.

Financing: Financing is available, please contact Susan (215) 361-9099 at the auction company for details.

Inspection: Items will be available for inspection beginning one week prior to the auction from 8:00AM to 4:00PM or sale day morning beginning at 7:00AM. The site will be closed Saturday and Sunday, April 27th and 28th.

Removal: After complete payment, all sale items may be removed on sale day as long as the removal activity is not disruptive to the sale and only until 5:00PM. Items may also be removed Friday, May 3rd and Monday thru Wednesday, May 6-8 from 8:00AM until 4:00PM. The site will be closed Saturday and Sunday, May 4th and 5th. All items must be removed no later than Wednesday, May 8, 2019 by 4:00PM.

Phone: (215) 361-9099 • Fax: (215) 361-9212

FORKLIFT & CONTRACTOR TOOLS

CATERPILLAR Cushion Tired Forklift, s/n 3EC3117, powered by LP gas (dual fuel) engine and shuttle transmission, equipped with 3-stage mast, 46" forks, and FOPS. In good condition.

MILLER Asphalt Curb Machine, gas powered • Asphalt Patch Heater • **HUSQVARNA** FS400 Walk Behind Concrete Saw, Honda GX290 • **1999 MILLER** Bobcat 225NT, 225 Amp/8500 Watt Welder/Generator, s/n KK328434, Onan gas (117 Hours) • **2011 MILLER** Wildcat 200 Amp/6500 Watt Welder/Generator, s/n MB500352R, Subaru gas engine (93 Hours) • **INGERSOLL RAND** Gas Powered Air Compressor, Honda GX390 • **(3) STIHL** TS800 and **STIHL** TS700 Demo Saws • (2) Demo Saw Carts (TS800 and TS700) • **(6) MIKASA** and **MBW** Plate Compactors • **WACKER** BS60-4S Foot Compactor • **WACKER** BS50-2Foot Compactor • **(2) HONDA** 5000 Watt and 3000 Watt Generators • **STIHL** BR600 Backpack Blower • **COOL DRIVE** Gas Powered Pressure Washer, with 300 gallon poly tank and hose reel • **SKATBLAST** Bead Blast Cabinet, with dust collector • Small Quantity Concrete Blankets • (2) 16" and (1) 18" Concrete Saw Blades • **LARGE QUANTITY** Road Signs and Safety Cones • **WINDMASTER** Sign Stands • Safety Barrels • (2) 1,000 Gallon Double Wall Round Fuel Tanks



CAT FORKLIFT

SURVEY INSTRUMENTS

SPECTRA PRECISION Pipe Laser • **TOPCON** RL-H1SA Rotating Laser, with grade • **TOPCON** RL-H3C Rotating Laser • **TOPCON** RL-HB Rotating Laser • **(3) APACHE** Bullseye 3+ Laser Receivers • Spare Blaw-Knox Feed Sensors • Tripods and Grade Poles

EQUIPMENT ATTACHMENTS

PROTECH 12' Snow Pusher (Rubber Tired Loader) • Vibratory Plate Compactor (Komatsu PC200-4) • 36", 24" & 12" Digging Buckets (Case 580) • **ASBURY** Left Side Dump Loader Bucket, with ACS coupler • Cat and Kennametal Carbide Bullet Teeth • (5) 12R24.5 Tires (**UNUSED** Recaps) • (4) 255/70R22.5 Tires (**2 NEW**) • (2) 12R24.5 Tires • (1) 11R24.5 Tires • (2) 11R24.5 Tires (**UNUSED** Recaps) • (2) 215/75R17.5 Tires (**UNUSED**) • (2) 225/75R15 Tires (**UNUSED**)

ABSOLUTE AUCTION COMPLETE LIQUIDATION

THURSDAY, MAY 2, 2019 - 9:00AM
Flemington, New Jersey

ASPHALT MILLING MACHINE



2014 ROADTEC Model RX-600E-4 Milling Machine, s/n 2077, powered by Cummins QXS-15, 620HP diesel engine and hydraulic drive, equipped with 7'2" cutting width, 13" cut depth, 32" discharge belt, auto slope and grade, cruise control, 58" crawlers, and 12" TBG with neoprene pads. In good to very good condition. (1,749 Hours) (NEW Rear Pads) (Balance of Cummins Engine Warranty Remaining Thru 10/19 or 6,000 Hours)

'14 ROADTEC RX-600E-4

ASPHALT PAVERS AND ROAD WIDENER ATTACHMENT

2016 ROADTEC Model RP-195E Crawler Paver, s/n 4031, powered by Cummins QSB-6.7 diesel engine and hydraulic drive, equipped with Carlson EZIV-1019, 10'-19' vibratory screed, s/n 21001014, electric heat, MOBA-Matic II Digi-Slope and Grade instruments, wash down system, and 18" rubber tracks. In very good condition. (590 Hours) (Balance of Cummins Engine Warranty Remaining Thru 5/9/21 or 6,000 Hours)



'16 ROADTEC RP-195E

2016 WEILER Model P385 Crawler Paver, s/n P385B-2050, powered by Cat CB3.4B diesel engine and 3-speed hydraulic drive, equipped with 8-16' vibratory screed, electric heat, auto slope and grade, power crown, and 14.5" crawler pads. In good to very good condition. (869 Hours) (NEW Augers and Bearings)



'16 WEILER P385

2006 INGERSOLL RAND Model PF-4410 Crawler Paver, s/n 188762, powered by Cummins diesel engine and hydraulic drive, equipped with Blaw-Knox 8' to 16' screed, electric heat, Ultimat power slope and crown, wash-down hose, and 14" rubber tracks. In good condition. (02,967 Hours) (Blaw-Kontrol II Grade and Slope Control Instruments and Feed Sensors)



'06 IR PF-4410

1994 MIDLAND Model SA Road Widener Attachment, s/n 213, powered by Hatz diesel engine, equipped with 11' discharge conveyor and ACS quick coupler. In good condition. (01,489 Hours)



'94 MIDLAND SA

ASPHALT ROLLERS

2017 CATERPILLAR Model CB64B Tandem Vibratory Roller, s/n C5600384, powered by Cat C4.4 diesel engine and hydrostatic transmission, equipped with 79" smooth drums, Versa Vibe compaction control, drum vibration selector, variable speed, water system, and ROPS canopy. In very good condition. (374 Hours) (Balance of Manufacturer Warranty-Powertrain and Hydraulics-Remaining Thru 10/3/20 or 1,500 Hours)



'17 CAT CB64B



'16 CAT CB34B

2016 CATERPILLAR Model CB34B Tandem Vibratory Roller, s/n XB400284, powered by Cat C2.2 diesel engine and hydrostatic transmission, equipped with 51" smooth drums, drum vibration selector, water system, and folding ROPS post. In very good condition. (723 Hours) (Balance of Manufacturer Warranty-Powertrain and Hydraulics-Remaining Thru 4/3/20 or 1,500 Hours)

2016 CATERPILLAR Model CB24B Tandem Vibratory Roller, s/n 2X400514, powered by Cat C1.5 diesel engine and hydrostatic transmission, equipped with 47" smooth drums, drum vibration selector, and folding ROPS post. In very good condition. (465 Hours)



'16 CAT CB24B



'16 CAT CB14B

2016 CATERPILLAR Model CB14B Tandem Vibratory Roller, s/n 47301133, powered by Kohler diesel engine and hydrostatic transmission, equipped with 39" smooth drums, drum vibration selector, and folding ROPS post. In very good condition. (592 Hours) (Balance of Manufacturer Warranty-Powertrain and Hydraulics-Remaining Thru 6/8/19 or 3,000 Hours)

HYDRAULIC EXCAVATORS AND ATTACHMENTS

2017 MECALAC Model 8MCR Skid Excavator, s/n 0131327, powered by Deutz diesel engine and hydraulic drive, equipped with 71" dipper stick with auxiliary hydraulics and hydraulic coupler, articulated boom, 82" general purpose loader bucket and 18" digging bucket, 83" backfill blade, enclosed ROPS cab with air conditioning, and 17.5" rubber tracks. In excellent condition. (125 Hours) (Balance of Manufacturer Warranty Remaining Thru 11/19)



17 MECALAC 8MCR



97 JD 270LC

1997 JOHN DEERE Model 270LC Hydraulic Excavator, s/n 70012, powered by John Deere diesel engine and hydraulic drive, equipped with 10'6" dipper stick, Geith 44" digging bucket, JRB quick coupler, stiff arm bracket, and 31.5" TBG pads. In good condition with good undercarriage. (07,255 Hours)

Attachments: 5-Tine Grapple, with quick coupler (JD 270) • 18" & 24" Digging Buckets (JD 270)

TRACTOR LOADER BACKHOES AND ROAD MAINTAINER

2013 CASE Model 580 Super N, 4x4 Tractor Loader Extend-A-Hoe, s/n 585352, powered by Case diesel engine and shuttle transmission, equipped with 4-in-1 loader bucket, Helac 18" clamshell digging bucket, 4-stick backhoe controls, front and rear auxiliary hydraulics, adjustable hydraulic 8-30 GPM flow, enclosed ROPS cab with heat and air conditioning, 12x16.5 front and 19.5L24 rear tires. In good condition with good tires. (001,971 Hours)



13 CASE 580 SUPER N 4X4 EXTEND-A-HOE



07 CASE 580 SUPER M SERIES II 4X4 EXTEND-A-HOE

2007 CASE Model 580 Super M, Series II, 4x4 Tractor Loader Extend-A-Hoe, s/n N6C412982, powered by Case diesel engine and shuttle transmission, equipped with general purpose loader bucket, 24" digging bucket, rear auxiliary hydraulics, rear pilot controls, enclosed ROPS cab with heat, 12-16.5 front and 19.5L24 rear tires. In good condition with good tires. (04,732 Hours)



1987 HUBER Model M-850-A Maintainer, s/n M-652, powered by diesel engine and hydrostatic transmission, equipped with 9' hydraulic moldboard, 6' knockdown blade, ROPS canopy, 11L-16 front and 23.1-26 rear tires. In good condition with fair to good tires. (03,910 Hours)

HUBER M-850-A

SKID STEER LOADER AND ATTACHMENTS

2014 CATERPILLAR Model 289D Crawler Skid Steer Loader, s/n TAW00825, powered by Cat diesel engine and 2-speed hydrostatic transmission, equipped with 82" general purpose loader bucket, high flow XPS hydraulics, 9-pin electrics, rear backup camera, enclosed ROPS cab with heat and air conditioning, and 18" rubber tracks. In good to very good condition with good tracks. (1,539 Hours)



14 CAT 289D & 16 CAT PC310B (SOLD SEPARATELY)

Attachments: 2016 CATERPILLAR PC310B, 40" Cold Planer Attachment, s/n LZP00680, with hydraulic side shift and tilt • 2007 FCC LAF3576-0022, 76" Soil Preparator, s/n G060649 • JOHN DEERE TR48B, 48" Trencher Attachment, s/n 900208, with dirt chain • BOBCAT 15 Auger Attachment, s/n 187400363 • 84" Hydraulic Sweeper, with hydraulic angle and water spray • 8' Snowplow, with hydraulic angle • 48" Fork Attachment • BOBCAT Hydraulic Tilt-Tatch Bucket Coupler

PORTABLE CHIPPER, STRAW BLOWER, AIR COMPRESSOR, AND TRENCH COMPACTOR

2012 BANDIT Model 1390XP Portable Drum Chipper, s/n 4FMUS1512CR001225, powered by Perkins diesel engine, equipped with 13" capacity, hydraulic winch, 360° chute rotation with hydraulic adjustable chute deflector. In very good condition. (0,340 Hours)



12 BANDIT 1390XP

2008 REINCO Model TM-35XKUB Portable Straw Blower, s/n 4681, powered by Kubota V1505 diesel engine, equipped with pintle tow and ST225/75R15 tires. In good condition with good tires. (0,032 Hours)



08 REINCO TM-35XKUB

2004 WACKER Model RT Articulated Trench Compactor, s/n 5509145, powered by Lombardini diesel engine, equipped with 32.5" split padfoot drums and umbilical remote control. In fair condition. (381 Hours) (Does Not Vibrate)



2008 INGERSOLL RAND Model P185WJD, 185 CFM Portable Air Compressor, s/n 398629UBSD08, powered by John Deere 4024TF diesel engine, equipped with 225/75R15 tires. In good to very good condition. (1,359 Hours)

08 IR P185WJD

TRUCK TRACTOR AND LOWBOY TRAILER

2001 INTERNATIONAL Model 5900i Tandem Axle Truck Tractor, powered by Cummins N14-460Ei, 460HP diesel engine and Eaton Fuller 18 speed transmission, equipped with 52,000 lb rears, 16,000 lb front axle, power divider, wetline kit, aluminum headache rack, 3-stage engine brake, double frame, aluminum wheels, 218" wheelbase, Neway air ride suspension, cruise control, air conditioning, and 11R24.5 tires. In good condition with good tires. (275,402 Miles)



'01 INTERNATIONAL 5900i

1995 TALBERT Model T3DW-50SA-HRG-1-T1, 50 Ton Tri-Axle Lowboy Trailer, equipped with non-ground bearing hydraulic detachable gooseneck, 22'6"x8'6" level deck, 11'6" deck over axles, air lift rear axle, air ride suspension, outriggers, chain dogs, and 255/70R22.5 tires. In good condition with good tires. (Rebuilt All 3 Axles, Brakes and Bushings – New Air Bags on Lift Axle – Reinforced Hitch Area)



'95 TALBERT 50 TON

DUMP, ROLLBACK, AND FLATBED TRUCKS

1998 MACK Model RD688S Tandem Axle Dump Truck, powered by Mack E7-350, 4 Valve diesel engine and Eaton Fuller 8LL transmission, equipped with Bibeau 14.5' heated, steel dump body with power tarp and chute, 44,000 lb rears, 18,000 lb front axle, Jacobs 2-stage engine brake, camelback suspension, tow package with air, air conditioning, and 12R24.5 tires. In good condition with good tires. (219,539 Miles)



'02 FORD F-650

2002 FORD Model F-650 Single Axle Dump Truck, powered by Cummins ISB240, 240HP diesel engine and 7 speed transmission, equipped with Heil 10' steel dump body with chute, dual rear wheels, aluminum wheels, cruise control, air conditioning, 17,500 lb rear axle, 8,500 lb front axle, 26,000 lb GVWR, and 10R22.5 tires. In good condition with good tires. (055,662 Miles)



'98 MACK RD688S

2003 GMC Model 5500 Single Axle Mason Dump Truck, powered by diesel engine and automatic transmission, equipped with 9' mason body with drop sides and electric hoist, behind cab toolboxes, tow package with electric, dual rear wheels, 18,000 lb GVWR, and 245/70R19.5 tires. In good condition with good tires. (87,994 Miles)



'05 FORD F-650XLT

2005 FORD Model F-650XLT, Super Duty Pro Loader Extended Cab Single Axle Rollback Truck, powered by Cummins ISB230 diesel engine and automatic transmission, equipped with Jerr-Dan model 21RRSB, 10,000 lb, 21' rollback body,

hydraulic winch, tow package, with air, air ride suspension, air brakes, air conditioning, 26,000 lb GVWR, and 245/70R19.5 tires. In good condition with good tires. (070,512 Miles)

2014 FORD Model F-450XL, Super Duty 4x4 Crew Cab Flatbed Truck, powered by Powerstroke 6.7L diesel engine and automatic transmission, equipped with 9' steel flatbed with gooseneck hitch, headache rack with LED work lights and rear camera, dual rear wheels, tow package with electric, power windows and mirrors, cruise control, air conditioning, 16,500 lb GVWR, and 225/70R19.5 tires. In good condition with good tires. (32,112 Miles)



'03 GMC 5500



'14 FORD F-450XL 4X4

TACK TRUCK AND WATER TRUCKS



'05 ISUZU WITH SEAL MASTER 300 GALLON

2005 ISUZU Single Axle Tack Truck, powered by Isuzu diesel engine and automatic transmission, equipped with 12' steel flatbed, Seal Master model SK300, 300 gallon tack distributor, s/n E2Z00-006, Honda gas, 7'6" spray bar and wand, cruise control, air conditioning, and 14,500 lb GVWR. In good condition with good tires.



'89 MACK R690T WITH ALLIED 3,600 GALLON

1989 MACK Model R690T Single Axle Water Truck, powered by Mack EM6-250 diesel engine and Maxitorque 5 speed transmission, equipped with Allied 3,600 gallon aluminum water tank, 3" PTO driven pump, air conditioning, and 11R22.5 tires. In good condition with good tires.



MACK R686ST

1977 MACK Model R686ST Tandem Axle Flatbed Water Truck, powered by Mack (Pedigree) diesel engine and 5 speed transmission, equipped with 13' steel flatbed with 2,000 gallon poly water tank, 2" gas powered loading pump, camelback suspension, tow package with air, and 11R24.5 tires. In good condition with good tires.

UTILITY TRUCKS, BOX TRUCK, AND PICKUPS

2008 FORD Model F-450XL, Super Duty 4x4 Extended Cab Utility Truck, powered by Powerstroke 6.4L diesel engine and automatic transmission, equipped with Reading 9' open utility body, dual rear wheels, tow package with electric, running boards, power windows, locks, and mirrors, cruise control, air conditioning, 16,000 lb GVWR, and 225/70R19.5 tires. In good condition with good tires.

2013 FORD Model F-250 Super Duty, 4x4 Utility Truck, powered by 6.2L gas engine and automatic transmission, equipped with Reading 8' open utility body, SnowEx 8'6" HD snowplow, 100 gallon fuel tank with 12 volt pump, tow package with electric, power windows, locks, and mirrors, cruise control, air conditioning, and 245/75R17 tires. In good condition with good tires. (53,844 Miles)

2009 CHEVROLET Model 2500HD Extended Cab Utility Truck, powered by Vortec 6.0L gas engine and automatic transmission, equipped with ABC 8' open utility body, 100 gallon fuel tank with 12 volt pump, running boards, tow package with electric, air conditioning, and LT265/75R16 tires. In good condition with good tires.

1997 ISUZU Model FRR Cab Over Van Body Truck, powered by Isuzu diesel engine and automatic transmission, equipped with Morgan 18' aluminum van body with lift gate, dual rear wheels, 19,500 lb GVWR, and 215/75R17.5 tires. In good condition with good tires.

2005 FORD Model Ranger XLT, 4x4 Extended Cab Pickup Truck, powered by 4.0L gas engine and automatic transmission, equipped with 6' bed with cap and side doors, power windows, locks, and mirrors, air conditioning, and P255/70R16 tires. In fair to good condition with good tires.



'13 FORD F-250 4X4



'97 ISUZU FRR

'05 FORD RANGER XLT 4X4



'08 FORD F-450XL 4X4



'09 CHEVY 2500HD



TRAILERS



**'04 TALBERT
20 TON**

2004 TALBERT Model AC-20, 20 Ton Tandem Axle Tag-A-Long Trailer, equipped with 20'x8'6" load deck with 5' beavertail and 5' ramps, spring suspension, 47,540 lb GVWR, and 215/75R17.5 tires. In good condition with good tires.

2013 BIG TEX Model 22GN-25BK+5CP Tandem Axle Gooseneck Trailer, equipped with 25'x8'6" wood deck, 5' beavertail and 5' ramps, 48" spread axle, aluminum wheels, 22,500 lb GVWR, and 235/80R16 tires. In good condition with good tires.

1997 PEQUEA Tandem Axle Tag-A-Long Trailer, equipped with 16'x6' wood deck with ramps, surge brakes, pintle tow, and 225/75R15 tires. In good condition with good tires.

LITTLEFORD 4,880 Gallon Tandem Axle Liquid Asphalt Storage Trailer, equipped with aluminum jacket and insulated. In fair condition.



**'13 BIG TEX
GOOSENECK**