

1440 COWPATH RD. • HATFIELD, PA 19440
215/361-9099 • Fax: 215/361-9212
www.hunyady.com



87 CAT D11N



CAT 777B END DUMPS



CRAWLER CONVEYORS

PRE-SORTED
FIRST CLASS MAIL
US POSTAGE
PAID
UPPER DARBY, PA
PERMIT #45



ABSOLUTE ONLINE ONLY AUCTION

EVERYTHING SELLS TO THE HIGHEST BIDDER REGARDLESS OF PRICE!

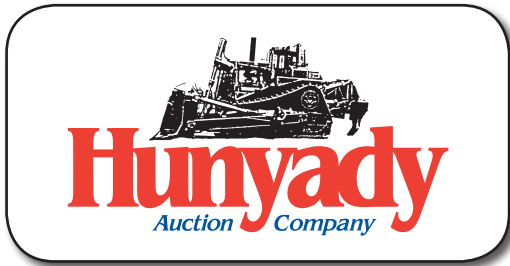
Material Recovery LLC - Bethlehem, Pennsylvania



13 IROCK TS-516

BIDDING BEGINS:
FRIDAY, JANUARY 3, 2020
BIDDING CLOSES:
WEDNESDAY, JANUARY 8, 2020 @ 12:00 NOON EST

ABSOLUTE ONLINE ONLY AUCTION



Notice: Material Recovery LLC has completed this slag reclamation and recovery project, and the following equipment has become surplus to their current needs. All Equipment will sell via Absolute Online Auction to the highest bidder, regardless of price.

Location: 3000 Commerce Center Boulevard, Bethlehem, Pennsylvania 18015

Directions: FROM I-78: Follow to Exit #67 Hellertown/Bethlehem/PA Route 412. Proceed to Route 412 North (Hellertown Road) and follow approximately (0.5) miles to traffic light at Commerce Center Boulevard and turn RIGHT. Continue (0.5) mile to Auction Site on Right. Look for auction signs directing you into drive and continue past scale house and follow to equipment layout area on left side of drive.

Inspection: Items will be available for inspection from Monday and Tuesday, January 6 and 7, 2020 from 8:00AM to 4:00PM and on Wednesday, January 8, 2020 from 8:00AM until 12:00PM. Bids can be placed during the inspection period.

Terms: A 5% internet service fee will be added to the high bidder invoice. Payment in full is required by Thursday, January 9, 2020 at 3:00PM Eastern, in US dollars, via wire transfer. For any other form of payment contact auction company. **Absolutely NO PAYMENTS will be accepted at the Auction Sites.**

Sales Tax: Since this contractor is selling items not normally sold in the course of his business, the Commonwealth of Pennsylvania considers this an isolated sale and does not require the auction company to collect sales tax.

Removal: After complete payment, all sale items may be removed January 9 and 10, and January 13 through 16, 2020 by appointment only, 9:00AM to 4:00PM. All items must be removed no later than Thursday, January 16, 2020 Items which require dismantlement and permit hauling will be granted extended loadout timeframe. Contact Auction Company for particulars.

Shipping and Hauling: Buyer is fully responsible for shipping/hauling of their items, at their own expense. Assistance will be provided for loading. There are no loading docks or ramps for loading. Trailers must be detachable lowboys or ramps.

Motor Vehicle Titles: Following complete payment, motor vehicle titles will be mailed via overnight courier, within (2) business days. An administrative fee of \$25.00 per title will be charged and added to the purchase invoice. Local buyers can pick up titles, in person, at the Hunyady Auction main office.

Sale Site Phone: (800) BID-N-BUY • Sale Site Fax: (215) 361-9212

ABSOLUTE ONLINE ONLY AUCTION

**EVERYTHING SELLS TO THE HIGHEST
BIDDER REGARDLESS OF PRICE!**

**Material Recovery LLC
Bethlehem, Pennsylvania**

BIDDING BEGINS:

FRIDAY, JANUARY 3, 2020

BIDDING CLOSSES:

WEDNESDAY, JANUARY 8, 2020 @ 12:00 NOON EST

For Complete Listing Please See Our Photo Library at www.hunyady.com!

CRAWLER SCREENING PLANTS



2013 IROCK Model TS-516 Crawler Hydraulic Screening Plant, s/n IR03M5162088, powered by Cat C4.4 diesel engine, equipped with feed hopper with AR-400 liners and hinged folding wings, 48"x15' belt feeder, 5'x16' 2-deck vibratory incline screen with adjustable pitch and 3" steel punch plate and 2" wire screen material, 48" collection conveyor, 55"x18' main discharge conveyor with hydraulic raise/

'13 IROCK TS-516

lower and hydraulic folding head section, (2) 36"x25' hydraulic folding side discharge conveyors, umbilical remote, 156" crawlers, and 20" TBG pads. In good to very good condition with good to very good undercarriage. (Meter Reads 1,066 Hours) (35,000 kg/77,161 lb Machine Weight)

2007 KEESTRACK Model Frontier Crawler Hydraulic Screening Plant, s/n 492, powered by Deutz 4 cylinder liquid-cooled diesel engine, equipped with feed hopper with hydraulic folding wings, 50"x12'6" steel apron feeder, 5'10"x14'9" 2-deck vibratory screen with 4" steel punch plate and 1/4" wire screen material, 17' collection conveyor, 54"x21'4" main discharge conveyor with hydraulic folding head section, (2) 32"x22' side discharge conveyors with hydraulic raise/lower and remote operation (one with folding head section), radio and umbilical remotes, 14'6" crawlers, and 18" TBG pads. In good condition with fair to good undercarriage. (Meters Read 3,800 & 19 Hours) (Less Than 50 Hours on Rebuilt Deutz; New Screen Main Bearings)



'07 KEESTRACK FRONTIER

CRAWLER CONVEYORS, PORTABLE STACKER, AND CROSS-BELT MAGNETS

2016 TELESTACK Model TC421 Hydraulic Crawler Conveyor, s/n 17-1187-0616, powered by Deutz water cooled diesel engine, equipped with 42"x71' conveyor with feed hopper, hydraulic raise/lower, and 21' hydraulic folding head section with magnetic head pulley, umbilical remote, 136" crawlers, and 16" TBG pads. In good to very good condition with good to very good undercarriage. (Meter Reads 1,714 Hours) (12,290 kg /27,095 lb Machine Weight)



'16 TELESTACK TC421 (MAGNET SOLD SEPARATELY)

2015 TEREX Model CP020-100-1, 30"x78" Suspended Hydraulic Cross-Belt Magnet, s/n 98075-7, with suspension bridge. In good condition.



'15 TEREX CP020-100-1



'16 EZYSTACK TR6536 (MAGNET SOLD SEPARATELY)

2016 EZYSTACK Model TR6536 Hydraulic Crawler Conveyor, s/n 2312, powered by Cat 4 cylinder diesel engine, equipped with 36"x65' conveyor with feed hopper, hydraulic raise/lower, and 24' folding head section with magnetic head pulley, umbilical remote, 120" crawlers, and 16" TBG pads. In good to very good condition with good to very good undercarriage. (Meter Reads 1,588 Hours) (10,000 kg /22,046 lb Machine Weight)

2015 TEREX Model CP020-100-01, 30"x78" Suspended Hydraulic Cross-Belt Magnet, s/n 98075-8, with suspension bridge. In good condition.

2015 TEREX Model TX440, 30"x78" Suspended Hydraulic Cross-Belt Magnet, s/n 97792, with suspension bridge. In good condition.



'15 TEREX CP020-100-1

2016 EZYSTACK Model TR6536 Hydraulic Crawler Conveyor, s/n 2277, powered by Cat 4 cylinder diesel engine, equipped with 36"x65' conveyor with feed hopper, hydraulic raise/lower, and 24' folding head section with magnetic head pulley, umbilical remote, 120" crawlers, and 16" TBG pads. In good condition with good undercarriage. (Meter Reads 2,621 Hours) (10,000 kg/22,064 lb Machine Weight)



'16 EZYSTACK TR6536 (MAGNET SOLD SEPARATELY)



'15 TEREX TX440

Belt Magnet Tower Consisting of: IMI 36" x 66" Suspended Hydraulic Belt Magnet, s/n 25895, with suspension tower measuring 20' high x 10' wide with (4) manual cable winches for adjustable suspension height. In good condition. (Seller will assist loading; Buyer can cut on premises with proper Insurance and Workers Compensation Certificates)



'16 IRON CITY SUPPLY CONVEYOR

2016 IRON CITY SUPPLY 35'x24" Portable Hydraulic Stacking Conveyor, s/n C15131, powered by 418cc diesel engine with electric start, equipped with channel frame, receiving hopper, pintle tow, and 75R16 tires. In good condition with good tires. (New Engine With Less Than 50 Hours)

Grizzly Tower, approximately 14' wide grizzly (manganese), 11'6" opening between tower supports, 12' high @ low end of grizzly, with chute. (Seller Will Assist Loading; Buyer Can Cut on Premises with Proper Insurance and Workers Compensation Certificates)

BELT MAGNET TOWER



CRAWLER TRACTOR



'87 CAT D11N

1987 CATERPILLAR Model D11N Crawler Tractor, s/n 74Z00394, powered by Cat 3508 diesel engine and powershift transmission, equipped with U-blade with dual tilt cylinders, 4-barrel 3-shank ripper, ROPS over enclosed cab with heat, and 36" SBG pads. In good condition with good undercarriage. (Meter Reads 40,385 Hours)

RUBBER TIRED EXCAVATOR AND ELECTROMAGNET ATTACHMENTS



'02 LIEBHERR A904

2002 LIEBHERR Model A904 Rubber Tired Hydraulic Excavator, s/n 66611230, powered by Liebherr diesel engine and powershift transmission, equipped with Mozelt CoolGen 4, 13KW belt-driven generator, approximately 44" electromagnet attachment, auxiliary hydraulics, elevating enclosed ROPS cab, (4) hydraulic outriggers, and 10.00-20 solid tires. In good condition with fair tires. (Meter Reads 18,399 Hours) (Newer Magnet Generator)

RUBBER TIRED LOADER

1981 CATERPILLAR Model 992C Rubber Tired Loader, s/n 42X00987, powered by Cat 3412 diesel engine and powershift transmission, equipped with spade-nose bucket with teeth, Loadrite L2180 scale system, ROPS over enclosed cab, and 45/65R45 L5 tires. In good condition with very good, good, and fair tires. (Meter Reads 52,616 Hours)



'81 CAT 992C

(8) **UNUSED** 992 Bucket Teeth and (2) Shanks and Keepers

UNUSED 2018 DIMET Model DTM, 53" Electromagnet Attachment, s/n 8140, type 135, 220 volt/46 amp. In excellent condition. (3,859 lb Magnet Weight)



UNUSED '18 DIMET DTM 53"



2015 MOLEY MAGNETICS INC. Model ESA42, 42" Hydraulic Electromagnet Attachment, s/n 15587, 230-volt DC. In good condition.

'15 MOLEY MAGNETICS INC ESA42

85 TON END DUMPS



'90 CAT 777B

1990 CATERPILLAR Model 777B, 85 Ton End Dump, s/n 4YC01257, powered by Cat 3508 diesel engine and powershift transmission, equipped with heated dump body (not connected) with bed liners, supplemental steering, retarder, rock ejectors, enclosed ROPS cab, and 27.00R49 tires. In good condition with fair front and good rear tires. (Meter Reads 39,635 Hours) (Odometer Reads 490,936 Miles)

1989 CATERPILLAR Model 777B, 85 Ton End Dump, s/n 4YC01078, powered by Cat 3508 diesel engine and powershift transmission, equipped with heated dump body (not connected) with bed liners, supplemental steering, retarder, rock ejectors, enclosed ROPS cab, and 27.00R49 tires. In fair to good condition with fair front and good rear tires. (Meter Reads 84,114 Hours) (Odometer Reads 366,744 Miles)



'89 CAT 777B

TRUCK TRACTOR AND LOWBOY TRAILER



'91 GENERAL M931A2 AND '76 ROGERS 60 TON

1991 GENERAL Model M931A2, 5 Ton, 6x6 Tandem Axle Military Truck Tractor, VIN# 3102742, powered by Cummins 8.3L, 237HP diesel engine and 5 speed automatic transmission, equipped with wetline kit with Honda GX390 gas engine, spring suspension, canvas roof, tow package with pintle, air and electric, rear auxiliary hydraulics, and Michelin 16.00R20 tires. In good condition with excellent (new) tires. (Odometer Reads 21,722 Miles) (Meter Reads 0,708 Hours)

1976 ROGERS 60 Ton Tri-Axle Lowboy Trailer, VIN# T31BHPG60-D22-142-22, equipped with ground bearing hydraulic detachable gooseneck, 22'x8' drop side deck with extending outriggers to 10', 12' upper deck over wheels, airlift 3rd axle, 142,600 lb GVWR, 11.00-22 tires, and 10R17.5 lift. In good condition with good tires. (All New Brakes; Wheel Bearings; Air Brake Canisters; Air Lines; and Wiring)