

1440 COWPATH RD. • HATFIELD, PA 19440
215/361-9099 • Fax: 215/361-9212
www.hunyady.com



'17 CAT 926M



(2) OF (3) MACK CV713 GRANITE TRI-AXLES

PRE-SORTED
FIRST CLASS MAIL
US POSTAGE
PAID
UPPER DARBY, PA
PERMIT #45



'89 JD 4450 4X4 AND CASE-IH RMX340



ABSOLUTE AUCTION

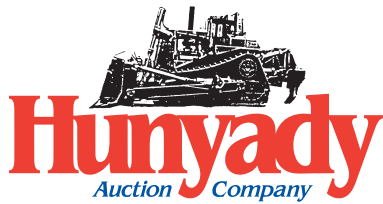
SURPLUS LIQUIDATION

Gernatt Asphalt Products, Inc.



'09 CAT 140M VHP

WEDNESDAY, OCTOBER 16, 2019 - 9:00AM
Delevan, New York (45 Miles Southeast of Buffalo)



Online Bidding Powered By proxibid

Please visit our website at www.hunyady.com

Full Photo Library Available

NOTICE: Gernatt Asphalt Products has once again decided to liquidate equipment and trucks that are surplus to their present needs. Gernatt Asphalt continues to provide the very best in sand, gravel, and asphalt services throughout Western New York and Northwestern Pennsylvania. Everything in the auction is owned by Gernatt Asphalt, with the exception of a few items that have been added by Union Concrete and Construction Corporation. All items will sell at absolute auction to the highest bidder, without minimums, reserves, or buyer's premium, with the exception of the Cone and Jaw Crushers which will be Offered Subject To Owner's Immediate Confirmation.

Auctioneer's Note: Much of the equipment in the sale was purchased new and well maintained by Gernatt Asphalt Products, Inc. Service records will be available.

Location: The auction will be held at the Gernatt facility located at 11802 Route 16, Delevan, New York 14042.

Directions: TRAVELING EAST/WEST INTERSTATE 86 (Route 17): Exit #27 (Route 16/446 Hinsdale) Proceed North on Route 16 approximately (26.5) miles to sale site on right.

Online Bidding: Live internet bidding will be provided by Proxibid. Proxibid will charge an Internet Service Provider Fee of 5% to the successful internet bidder for items over \$10,000 and 10% for items \$10,000 and under, for each lot purchased on-line. All interested internet bidders are required to register w/Proxibid 24 hours prior to the auction at www.proxibid.com/hunyady or call 877-505-7770.

Terms: Payment in full is required on sale day by cash, certified funds, or check with a bank letter of guarantee. Sample letter of guarantee: "We hereby guarantee the payment of our customer _____ written on his account up to _____ dollars for purchases at your auction sale on October 16, 2019" All guaranteed checks should be made payable to Hunyady Auction Co.

Sales Tax: Sales Tax will be collected on all items at the rate of 8%. If Buyer is a New York State Resident: Michael J. Hunyady, Inc., dba Hunyady Auction Company, is a registered vendor in the state of New York, therefore, we are obligated by law to collect sales tax on motor vehicle transactions. In accordance with New York State Sales Tax Regulation Section 525.2, we are required to collect sales tax as it applies to the "Point of Possession" (which is 8%, Cattaraugus County). If you reside in a county that collects sales tax at a lesser rate, you will be provided with Form AU-11 (Sales Tax Refund Form) to be filed at the time you register the motor vehicle.

Financing: Financing is available, please contact Susan (215) 361-9099 at the auction company for details.

Inspection: Items will be available for inspection beginning one week prior to the auction from 8:00AM to 4:00PM, or sale day morning beginning at 7:00AM. The site will be closed Saturday and Sunday, October 12th and 13th.

Removal: After complete payment, all sale items may be removed on sale day as long as the removal activity is not disruptive to the sale and only until 5:00PM. Items may also be removed Thursday and Friday, October 17th and 18th and Monday thru Wednesday, October 21st to October 23rd, from 8:00AM until 4:00PM. All items must be removed no later than Wednesday, October 23, 2019 at 4:00PM.

Phone: (800) BID-N-BUY • Fax: (888) 859-8958

CONE AND JAW CRUSHERS

(OFFERED SUBJECT TO OWNER'S IMMEDIATE CONFIRMATION)



UNUSED '13 PIONEER KPI-JCI ASTEC K200+

UNUSED 2013 PIONEER KPI-JCI/ASTEC K200+ Cone Crusher, s/n C110634, rated at 385TPH
2007 PIONEER KPI-JCI/ASTEC 3055, 30"x55" Jaw Crusher, s/n 407954, 200HP, electric motor. In good condition. (New Dies Installed) (Spare Parts Included)



'07 PIONEER KPI-JCI ASTEC 3055

EQUIPMENT ATTACHMENTS

General Purpose Loader Bucket (Volvo L220E) (No Cutting Edge) • **DUTCHMAN** 330i Hydraulic Tree Spade Attachment, s/n 7986 (Skid Steer) • **UNUSED ERSKINE** Hydraulic Post Pounder Attachment (Skid Steer) • **UNUSED TOMAHAWK 72"** Hydraulic Root Grapple Rake Attachment (Skid Steer) • (2) **UNUSED TOMAHAWK 72"** General Purpose Loader Buckets (Skid Steer) • Hydraulic Demolition Hammer, with shop made post driver (Cat 416) • 1999 **ROCKBLASTER 5000** Hydraulic Demolition Hammer, s/n 279036, with Geith coupler • **UNUSED GEITH 18"** Digging Bucket • 10' Root Rake (Cat D7G) • 8' Steel Pan • (2) 12' Angle Plows • 12' Angle Plow (Rubber Tired Loader) • (4) Wing Plows • 8' Hydraulic Angle Snow Plow • Dragline Bucket • 30" Core Bit • Battery Boxes, Demo Shields, Steps, and Hydraulic Hoses (Hydraulic Excavators) • (2) **GNB 36 volt** Battery Chargers (Forklifts)

TANKS, TOOLS, TRENCH BOXES, AND MISCELLANEOUS

10,000 Gallon Asphalt Tank, with 15 tons of PG64S-22 oil (weighs 42,800#) (Sold In Absentia) • 20,000 Gallon Steel Tank, with containment • (3) 1,000 Gallon Steel Tanks • (2) 5,000 Gallon Steel Emulsion Tanks • 500 Gallon Fuel Tank, with containment (In Rear of Dorsey Van Trailer) • 300 Gallon Skid Mounted Fuel Tank, with 110 volt electric pump • (3) Emulsion Tanks • 5,000 Gallon Steel Tank • **CORE CUT** CC6500 Walk Behind Concrete Saw, s/n 1259335, Wisconsin 4 cylinder gas engine. In good condition. (UC) • **EDCO GMS20/11H** Tile Saw, s/n 1699, Honda 1 cylinder gas engine. In good condition. (UC) • 11' Utility Body, with spray-on liner (UC) • Portable Concrete Mixer, Honda GX270 gas engine (UC) • (2 Pallets) Bucket Teeth (UC) • Discharge Hose (UC) • Kiln (UC) • Sandblast Cabinet (UC) • (1 Pallet) Hardware (UC) • 12,000# Steerable Lift Axle (UC) • Air Lift Axle (UC) • Pickup Liftgate (UC) • Electric Liftgate (UC) • Trencher Chain (UC) • Trencher Segments (UC) • Earth Saw Segments (UC) • (2) **UNUSED Vertical Air Receiver** Tanks • Plastic Line Guards • (2 Pallets) Fiberglass Totes • (6 Pallets) Terra-Mulch • Galvanized Bridge Decking • (5 Boxes) 50' Each Temporary Light Strings • CM 1 Ton Electric Chain Hoist • **HYSTER** Tandem Axle Lowboy Trailer, VIN# Unknown, and **GENIE S-60, 4x4 Aerial Lift,** s/n 6097 (Scrap) • (9 Sections) Concrete Pipe (Sold In Absentia) • Small Quantity Assorted Concrete Forms • 8'x16'x6" Channel Trench Box, with 66" weld-on spreaders • 8'x20'x6" Trench Box, with 36" spreaders • 8'x20'x4" Trench Box, with 30" spreaders • 8'x12'x5" Aluminum Trench Box, with 28" spreaders • 8'x8'x5" Aluminum Trench Box, with 28" spreaders

RUBBER TIRED LOADERS

2017 CATERPILLAR 926M Rubber Tired Loader, s/n LTE04397, Cat C-7.1 diesel engine and powershift trans, e/w Cat 2.7 cubic yard, general purpose loader bucket with bolt-on cutting edge, hydraulic coupler, power heated mirrors, enclosed ROPS cab with heat and ac, and 20.5x25 tires. In very good condition with good to very good tires. (668 Hours)



'17 CAT 926M

2011 CATERPILLAR 980H Rubber Tired Loader, s/n JMS05900, Cat C-15 Acert diesel engine and powershift trans with auto shift, e/w Cat 9.8 cubic yard general purpose loader bucket with bolt on cutting edge, bucket scale, enclosed ROPS cab with heat and ac, and 875/65R29 tires. In good condition with good tires. (Purchased New)



'11 CAT 980H

2002 CATERPILLAR 980G Series II Rubber Tired Loader, s/n AWH00486, Cat diesel engine and powershift trans with auto shift, e/w Rockland general purpose loader bucket with bolt-on cutting edge, ride control, fingertip controls, bucket scale, enclosed ROPS cab with heat and ac, and 29.5R25 tires. In good condition with fair to good tires. (Purchased New)



'02 CAT 980G SERIES II

2008 CATERPILLAR 972H Rubber Tired Loader, s/n A7D00675, Cat C-13 Acert diesel engine and powershift trans with auto shift, e/w Cat CWTS-A/AP custom loader bucket with bolt-on cutting edge, ride control, bucket scale, twin automatic greasing system, enclosed ROPS cab with heat and ac, and 26.5R25 tires. In good condition with good tires. (Purchased New)



'08 CAT 972H

2003 CATERPILLAR 972G Series II Rubber Tired Loader, s/n ANY00331, Cat diesel engine and powershift trans with auto shift, e/w 5.75 cubic yard general purpose bucket with bolt-on cutting edge, ride control, fingertip bucket controls, bucket scale, enclosed ROPS cab with heat and ac, and 26.5R25 tires. In good condition with good tires. (Purchased New)



'03 CAT 972G SERIES II

CATERPILLAR 966A Rubber Tired Loader, s/n 33A1333, Cat diesel engine and shuttle trans, e/w general purpose loader bucket with bolt-on cutting edge, enclosed cab. In good condition with fair to poor tires.

END DUMPS



(2) '89 CAT D550B

cab, and 33.25R39 tires. In good condition with good tires. (Purchased New)

EUCLID R35 74TD End Dump, s/n 43268, Detroit V12 diesel engine and powershift trans, e/w lined bed and 18.00R25 tires.

In good condition with good and very good tires. (Purchased New)

EUCLID 63TD End Dump, s/n B22902, 6 cylinder diesel engine and powershift trans, e/w lined and heated bed, 14.00x24 front and 13.00R25 rear tires. In fair condition with fair tires.



EUCLID R35

CATERPILLAR 550 End Dump Body and Frame

MOTOR GRADERS

2009 CATERPILLAR 140M VHP Motor Grader, s/n B9M00742, Cat C-7 Acert diesel engine and powershift trans, e/w 14' fully hydraulic moldboard with teeth, rear scarifier with (3) shanks, front push block, joystick controls, enclosed ROPS cab with heat and ac, and 17.5R25 tires. In good to very good condition with fair tires. (3,729 Hours)



'09 CAT 140M VHP

CATERPILLAR 16G Motor Grader, s/n 93U590, Cat 3406 diesel engine and powershift trans, e/w 16' fully hydraulic moldboard, rear mounted scarifier with (4) shanks, front push block, enclosed ROPS cab with heat and ac, and 18.00x25 tires. In good condition with fair to good tires.

CAT 16G



HYDRAULIC EXCAVATORS

1999 KOMATSU PW170ES Rubber Tired Excavator, s/n K30386, Komatsu diesel engine and hydraulic drive, e/w 9'6" dipper stick, 36" digging bucket, auxiliary hydraulics, enclosed ROPS cab with heat, (4) hydraulic outriggers, and 10.00x20 tires. In fair to good condition with good tires. (Grapple Not Included) (UC)



'99 KOMATSU PW170ES

2001 KOMATSU PC150LC-6K Hydraulic Excavator, s/n K34016, Komatsu diesel engine and hydraulic drive, e/w 9'6" dipper stick, digging bucket, enclosed ROPS cab with heat, and 23 1/2" TBG pads. In fair to good condition with fair undercarriage. (UC)

2001 TAKEUCHI TB145 Mini Hydraulic Excavator, s/n 14511614, Yanmar 4 cylinder diesel engine and hydraulic drive, e/w swing boom, 68" dipper stick, CP 24" digging bucket, hydraulic thumb, 72" backfill blade, Tag manual coupler, enclosed ROPS cab with heat, and 16" rubber tracks. In good condition with fair tracks. (1,469 Hours)



'01 TAKEUCHI TB145

CATERPILLAR 225B Hydraulic Excavator, Cat 3304DT diesel engine and hydraulic drive. In fair condition with fair undercarriage. (Not Running) (Complete Parts Machine)

TRACTOR LOADER BACKHOES AND SKID STEER LOADERS

1997 CATERPILLAR 416C IT, 4x4 Tractor Loader Extend-A-Hoe, s/n 1WR00593, Cat diesel engine and shuttle trans, e/w general purpose loader bucket with bolt-on cutting edge, 24" digging bucket, hydraulic front coupler, front auxiliary hydraulics, enclosed ROPS cab with heat, and 12.5/80-18 front and 19.5Lx24 rear tires. In good condition with fair to poor and (1) good tires. (UC)



'97 CAT 416CIT 4X4 (FORKS SOLD SEPARATELY)

1998 CATERPILLAR 416C, 4x4 Tractor Loader Extend-A-Hoe, s/n 4ZN07348, Cat diesel engine and powershift trans, e/w general purpose loader bucket with bolt-on cutting edge, 24" digging bucket, enclosed ROPS cab with heat, and 340/80R18 front and 19.5LR24 rear tires. In good condition with fair tires. (UC)



'98 CAT 416C 4X4

2003 GEHL SL6635DXT Series II Skid Steer Loader, s/n 602250, Deutz 4 cylinder diesel engine and hydrostatic trans, e/w 72" general purpose loader bucket, high flow auxiliary hydraulics, and 12x16.5 tires. In good condition with good tires. (UC)

1999 GEHL SL6635DXT Skid Steer Loader, s/n 11942, Deutz 4 cylinder diesel engine and hydrostatic trans, e/w 72" general purpose loader bucket, high flow auxiliary hydraulics, roof mounted poly water tank, and 12x16.5 tires. In good condition with fair to good tires. (UC)



'03 GEHL SL6635DXT II

UTILITY TRACTOR AND ATTACHMENTS

1989 JOHN DEERE 4450, 4x4 Utility Tractor, s/n 027851, John Deere 140HP diesel engine and 15 speed powershift trans, e/w 2009 John Deere 740 Classic loader attachment with general purpose bucket with bolt-on cutting edge, 3-point hitch, adjustable drawbar, PTO, electric outlet, dual hydraulic outlets, enclosed ROPS cab with heat and ac, 16.9R26 front and 20.8R28 rear tires. In very good condition with very good tires. (2,185 Hours) (Purchased New)



89 JOHN DEERE 4450 4X4

FORD 8N Utility Tractor. In good condition.

2005 CASE IH RMX340, 21' Hydraulic Disc Harrow, s/n JFH0025115, e/w 5' hydraulic folding side wings, transport wheels with hydraulic raise and lower, and 11L-15 tires. In very good condition with good tires. (Purchased New)



CASE-IH RMX340

1991 IHC 735 Hydraulic 5-Bottom Plow, s/n 1050000U003314, e/w variable width. In very good condition. (Purchased New)



IHC 735

1995 BRILLION SST-144, 14' Seeder. In good condition with good tires. (614 Acres) (Purchased New)

MCKEE Sno-Lander 1108, 10' Hydraulic Snow Blower, s/n 153, PTO driven. In very good condition. (JD 4450) (Purchased New)

JOHN DEERE 12' Hydraulic Angle Plow (Fits JD 4450) (Purchased New)

2015 LAND PRIDE RC2512, 12' Batwing Mower, e/w 4' center mower with (2) 4' hydraulic folding wings, 3-point hitch, PTO, and 20.5x6.75-10 tires. In good condition with good tires. (Purchased New)

(2) 2010 and 2008 WOODS 8' Brush Hog Attachments, 3-point hitch, PTO (Purchased New)

Disc Harrow, with manual width adjust, 3-point hitch • **HOWARD HR40-305, 10' Tiller**, s/n 040E004924, 3-point, PTO • **YORK 8' Manual Angle Hydraulic Broom**, 3-point hitch • **8' Grading Box**, 3-point hitch

ROLLERS AND COMPACTOR

1994 BOMAG BW120AD-2 Tandem Vibratory Roller, s/n 101170500980, Deutz 2 cylinder diesel engine and hydrostatic trans, e/w 47" smooth drums, drum cleaners, and water system. In good condition.



94 BOMAG BW120AD-2

1987 INGERSOLL-RAND DD-35 Tandem Vibratory Roller, s/n 8161S, Deutz 2 cylinder diesel engine and hydrostatic trans, e/w 40" smooth drums, drum cleaners, and water system. In good condition.



87 IR DD-35

1994 INGERSOLL-RAND DD-110 Vibratory Roller, s/n 5438, Cummins 4 cylinder diesel engine and hydrostatic trans, e/w 78" smooth drums, dual frequency vibration, drum cleaners, and water system. In good condition. (UC)

BROS SPV735D Vibratory Compactor, s/n Unknown, Detroit 3 cylinder diesel engine and hydrostatic trans, e/w 84" smooth drum and 23.1x26 tires. In fair condition with fair tires.

TRENCHERS, PORTABLE CHIPPER, AND HYDROSEEDER

CASE 70+4 Rubber Tired Combination Trencher/Backhoe, s/n 1164540, Deutz 4 cylinder diesel engine and hydrostatic trans, e/w 4-way blade, 8' trencher bar, backhoe attachment with 18" digging bucket, and 31x15.50-15 tires. In good condition with good tires.



CASE 70+4

DITCH WITCH J20, 4x4 Rubber Tired Trencher, s/n 29566, Wisconsin 2 cylinder gas engine and 3 speed trans, e/w 57" backfill blade, 6' trencher bar, and 23x8.50-12 tires. In good condition with good tires.



MORBARK 10

MORBARK 10 Portable Chipper, s/n Unknown, Ford 4 cylinder gas engine and Rockford PTO, e/w 7.00x15 tires. In good condition with good tires.

2003 REINCO HG10GX2A, 1,000 Gallon Portable Hydroseeder, s/n 1573, VIN# 1R94720243P195005, Kubota 4 cylinder diesel engine, e/w 3"x4" pump, electric winding hose reel with 1 3/4" hose, and 235/85R16 tires. In good condition with good tires. (UC)

FORKLIFT AND BROOM TRACTOR



KOMATSU FD30-10

KOMATSU FD30-10 Pneumatic Tired Forklift, s/n 231299, Komatsu diesel engine and shuttle trans, e/w 48" forks, 3-stage mast, FOPS canopy, 225/75R15 front and 6.50R10 rear tires. In fair to good condition with good tires. (Purchased New)

INTERNATIONAL Broom Tractor, International 6 cylinder gas engine and 5 speed trans with hi-lo, e/w 6' manual angle hydraulic broom, hydraulic tow bar, 30 gallon poly tank, rear wheel weights, 235/85R16 front and 14.9x24 rear tires. In good condition with good tires.

DUMP TRUCKS

2005 MACK CV713 Granite Tri-Axle Dump Truck, Mack E-tech 460HP diesel engine and Maxitorque T318L/RL/LR21, 18 speed trans, e/w J&J 19' aluminum dump body with electric tarp and chute, 46,000# rears, 20,000# front and 20,000# steerable lift axle, block/beam suspension, 2-stage engine brake, aluminum wheels, 86,000# GVWR, power windows and locks, heated mirrors, cruise control, ac, 425/65R22.5 front and 11R22.5 lift and rear tires. In good condition with good tires. (Purchased New)



05 MACK CV713 GRANITE

2005 MACK CV713 Granite Tri-Axle Dump Truck, Mack E-tech 460HP diesel engine and Maxitorque T318L/RL/LR21, 18 speed trans, e/w J&J 19' aluminum dump body with electric tarp and chute, 46,000# rears, 20,000# front and 20,000# steerable lift axle, block/beam suspension, 2-stage engine brake, aluminum wheels, 86,000# GVWR, power windows and locks, heated mirrors, cruise control, ac, 425/65R22.5 front and 11R22.5 lift and rear tires. In good condition with good tires. (Purchased New)



05 MACK CV713 GRANITE

2004 MACK CV713 Granite Tri-Axle Dump Truck, Mack E-tech 460HP diesel engine and Maxitorque T318L/RL/LR21, 18 speed trans, e/w J&J 18' aluminum dump body with electric tarp, 46,000# rears, 20,000# front and 20,000# steerable lift axle, camelback suspension, 2-stage engine brake, aluminum wheels, power windows and locks, heated mirrors, cruise control, ac, 425/65R22.5 front and lift tires, and 11R22.5 rear tires. In good condition with fair to good front and lift and very good rear tires. (Purchased New)



04 MACK CV713 GRANITE

1996 MACK RD688SX Tandem Axle Dump Truck, Mack diesel engine and automatic trans, e/w 17'6" lined, steel dump body, camelback suspension, ac, and 12.00R24 tires. In fair to poor condition with fair to good tires. (Off Road Use Only)

2008 STERLING Bullet Single Axle Flatbed Dump Truck, Cummins 6.7L Turbo diesel engine and automatic trans, e/w 12'3" steel flatbed, dual rear wheels, tow package with electric, cruise control, ac, and 225/70R19.5 tires. In good condition with good tires. (UC)

(2) 18' and (1) 16' Aluminum Dump Bodies. In fair condition. (One 18' Has Manual Tarp and Tailgate) (One 18' No Tailgate)

LUBE AND SERVICE TRUCKS

1994 MACK CH612 Single Axle Fuel/Lube Truck, Mack E7-300, 300HP diesel engine and Fuller 10 speed trans, e/w 2001 Curry Supply 16' fuel/lube body with 800 gallon fuel tank, Atlas Copco 2-stage hydraulic air compressor, (5) product tanks, waste oil tank, fuel reel with gallon indicator, self-winding hose reels, spring suspension, heated mirrors, cruise control, ac, and 285/75R24.5 tires. In good condition with good tires.



94 MACK CH612

1990 INTERNATIONAL 4900 Single Axle Fuel Lube Truck, International DT466 diesel engine and 6 speed trans, e/w 16' steel flatbed, 500 gallon fuel tank, (2) 3-compartment product tanks with pneumatic pumps, pneumatic luber, self-winding hose reels, 2-stage gas powered air compressor, tow package with electric, and 11R22.5 tires. In fair condition with good tires. (Off Road Use Only)

1999 FORD F550XL Super Duty Service Truck, 7.3L diesel engine and automatic trans, e/w 11' open service body with spray on liner, Auto Crane 6006H service boom, Miller Bobcat 225NT welder generator, Onan 21HP gas engine (1,683 hours), Champion R Series 2-stage air compressor, Kohler Command Pro 429cc gas engine, tow package, bumper vise, running boards, ac, (2) manual extending outriggers, and 225/70R19.5 tires. In good condition with good tires.



99 FORD F550XL

BUCKET, ROLL-OFF, AND FLATBED TRUCKS

2005 INTERNATIONAL 7300 Single Axle Bucket Truck, International DT466 diesel engine and Allison automatic trans, e/w 2006 Altec AA755L 55' aerial lift, s/n 0604BZ3008, insulated upper boom, lower boom insert, 350# capacity single man basket, material handling jib, upper hydraulic tool outlets, 21,000# rear and 12,000# front axle, full line body, tow package with air, 33,000# GVWR, cab protector, cruise control, ac, (4) hydraulic outriggers, and 11R22.5 tires. In good condition with good tires.



'05 INTERNATIONAL WITH ALTEC 55'

1995 FORD L9000 Tandem Axle Roll-Off Truck, Cat 3406 diesel engine and Fuller 9 speed trans, e/w 1994 American AR0602410, 24' roll-off body, s/n C-8-1486, Jacobs 2-stage engine brake, spring/beam suspension, tow package with air, ac, and 11R22.5 tires. In fair condition with very good front and good rear tires.



'95 FORD L9000 (CONTAINER NOT INCLUDED)

1978 CHEVROLET C-60 Single Axle Flatbed Truck, V-8 gas engine and 5 speed trans with 2 speed rear, e/w 19' wooden flatbed, spring suspension, 24,000# GVWR, and 11R22.5 tires. In good condition with good tires.

TRUCK TRACTOR, LOWBOYS, FLATBED, AND STEP DECK TRAILERS

1987 MACK R688ST Tandem Axle Truck Tractor, E7-350, 350HP diesel engine and Mack 12 speed trans, e/w 44,000# rears and 12,000# front axle, wetline, air ride suspension, Dynatard engine brake, 56,000# GVWR, 186" wheelbase, heated mirrors, and ac. In good condition with good tires. (Purchased New)



'87 MACK R688ST

1992 GLOBE GTDG-50, 50 Ton Tri-Axle Lowboy Trailer, e/w non-ground bearing detachable gooseneck, 23' level deck, 34" transition ramp, 12' deck over wheels, 10' width, air ride suspension, outriggers, chain dogs, and 255/70R22.5 tires. In good condition with good tires.



'92 GLOBE 50 TON

1983 CMI Tri-Axle Drop Side Lowboy Trailer, e/w ground bearing detachable gooseneck, 30" drop sides, 12' over axles, wetline, air ride suspension, outriggers, chain dogs, and 10.00R15 tires. In fair condition with good tires.



'98 FONTAINE 48'

1998 FONTAINE 48' Spread Axle Step Deck Trailer, e/w 10' upper deck, 38' lower deck, 102" width, 10'2" axle spread, air ride suspension, ratchet straps, aluminum headache rack, and 255/70R22.5 tires. In good condition with good tires.



'98 FONTAINE 45'

1998 FONTAINE 45' Tandem Axle Flatbed Trailer, e/w 96" width, spring suspension, sliding tandems, aluminum wheels, ratchet straps, and 295/75R22.5 tires. In good condition with good tires.

42' Quad Axle Flatbed Trailer, with spring suspension and 285/75R24.5 tires. In fair to good condition. (No Landing Gear)

DUMP AND ASPHALT TANK TRAILERS, AND ASPHALT DISTRIBUTOR



'05 J&J 34'

2005 J&J 34' Tri-Axle Aluminum Dump Trailer, e/w Roll-Rite electric tarp, poly bed liner, single chute, air ride suspension, 80,000# GVWR, aluminum wheels, 11R22.5 rear and 425/65R22.5 lift tires. In good condition with fair to good tires. (Purchased New)

1993 ETNYRE 8,000 Gallon Tandem Axle Asphalt Tanker, e/w spring suspension and 11.00x22 tires. In fair to good condition with good tires. (No Title - Sold With Bill of Sale Only)



'93 ETNYRE 8,000 GALLON

1988 MACK DM690S Tandem Axle Asphalt Distributor Truck, Mack diesel engine and Maxitorque T2060, 6 speed trans, e/w Etnyre Black Topper 3,000 gallon distributor with propane heat and 8' spray bar with 3' fold-up wings, camelback suspension, and 385/65R22.5 front and 11R22.5 rear tires. In fair to good condition with fair to good tires. (UC)

PICKUPS, SEDAN, AND PANEL VAN

2013 GMC 3500HD Sierra SL 4x4 Crew Cab Pickup Truck, Duramax 6.6 HD diesel engine and Allison automatic trans, e/w 8' bed, tow package, running boards, alloy wheels, power windows, locks, and mirrors, power heated seats, dual driver settings, sunroof, leather interior, cruise control, ac, and 275/70R18 tires. In good condition with good tires. (Purchased New)



'13 GMC 3500HD 4X4

2009 CHEVROLET Impala 4-Door Sedan, 3.9L gas engine and automatic trans, e/w power windows, locks, mirrors, and seats, ac, and 225/60R16 tires. In good condition with good tires.



'09 CHEVY IMPALA

2001 CHEVROLET Express 2500 Panel Van, Vortec 4.3L gas engine and automatic trans, e/w material rack, tow package, ac, and 225/75R16 tires. In good condition with good tires.



'01 CHEVY EXPRESS 2500

CAR HAULER AND PORTABLE WATER TREATMENT SYSTEM

1985 DORSEY DFVPT-83-E, 48' Tandem Axle Aluminum Car Haul Trailer, e/w 99" inside width, 112-7/8" inside height, fiberglass nose cone, swing side doors, hydraulic car lift, hardwood floor, 18' rear hydraulic car lift, electric hydraulic pump, air ride suspension, 58,540# GVWR, aluminum wheels, Honda EM5000SX gas generator, CD player, and 255/70R22.5 tires. In good condition with very good tires.



'85 DORSEY CAR HAULER

Portable Water Treatment System, Installed in 1994 GREAT DANE Tandem Axle Van Trailer, e/w roll-up rear door and side door, sliding tandems, spring suspension, 65,00# GVWR, and 11R22.5 tires. In good condition with fair tires.

VAN TRAILERS AND ALUMINUM RAMP

1990 DORSEY LTGARD-II, 28' Single Axle Reefer Trailer, e/w Carrier Thunderbird reefer unit, 4 cylinder diesel engine, roll-up rear door, side door, sliding tandems, and 11R22.5 tires. In good condition with fair tires.

1999 UTILITY VS2DC, 48' Tandem Axle Aluminum Van Trailer, e/w fiberglass roof, swing rear doors, sliding tandems, spring suspension, 65,000# GVWR, and 295/75R22.5 tires. In good condition with fair tires.

1999 UTILITY VS2DC, 48' Tandem Axle Aluminum Van Trailer, e/w fiberglass roof, rear swing doors, sliding tandems, spring suspension, and 65,000# GVWR. In good condition with fair to good tires. (Snow Damage To Roof)

1983 STOUGHTON FRPVW-505T-WEDGE, 50' Tandem Axle Van Trailer, e/w swing rear doors, sliding tandems, spring suspension, and 11R22.5 tires. In fair condition with fair tires. (Sold With Contents - Office Furniture)

1989 STOUGHTON GSVW-Z-455T-S-C, 45' Tandem Axle Aluminum Van Trailer, e/w swing rear doors, sliding tandems, spring suspension, 68,080# GVWR, and 10.00R20 tires. In fair to good condition with fair tires.

1990 DORSEY LTGARD-II, 28' Single Axle Aluminum Van Trailer, e/w rollup rear door, pullout ramp, spring suspension, curbside door, manual front stabilizer, 37,400 GVWR, and 11R22.5 tires. In good condition with good tires.

1990 DORSEY 28' Single Axle Aluminum Van Trailer, e/w roll-up rear door, pull-out ramp, pintle hitch with air, frame mounted 50 gallon fuel tank, and 11R22.5 tires. In good condition with good tires.

28' Single Axle Aluminum Van Trailer, e/w roll-up rear door, spring suspension, and 11R24.5 tires. In good condition with fair tires.

FRUEHAUF Tandem Axle FRP Van Trailer, e/w roll-up rear door, sliding tandems, and spring suspension. In fair to poor condition. (No Title)
16' Tandem Axle Trailer Frame, with ramps and fenders • 6'x30' Aluminum Ramp

MOTORCYCLE, GOLF CART, AND ATV

1996 BOSS HOSS Motorcycle, Boss Hoss V-8 ZRI Corvette 365HP gas engine and automatic trans, e/w MT90B16 74H front and AM21 230/60-15 rear tires. In fair to good condition with fair to good tires. (10,207 Miles) (Fuel Tank, Gauges, and Foot Rests Removed) (Tailpipe Smashed)

YAMAHA Electric Golf Cart, with charger. In good condition.

JOHN DEERE Gator 4x2 All Terrain Vehicle, s/n W004XZX044946, Kawasaki gas engine and direct drive trans, e/w dump body and 25x13-9 tires. In fair condition with poor front and good rear tires. (UC)



YAMAHA GOLF CART

FIRE TRUCK, SALT, AND VAN BODY TRUCKS



1998 FREIGHTLINER FL80 Single Axle Fire Truck, Cummins C8.3, 300HP diesel engine and automatic trans, e/w E-ONE pumper, s/n 17742 with 1,250 gallon water tank, Hale E-1 pump rated at 1,250 GPM, and 11R22.5 tires. In very good condition with very good to excellent tires.

1976 MACK RD685 Single Axle Salt Truck, Mack 6 cylinder diesel engine and 6 speed lo-hole trans, e/w 10' hydraulic salt spreader. In poor condition with fair tires. (Off Road Use Only)

'98 FREIGHTLINER FL80 salt spreader. In poor condition with fair tires. (Off Road Use Only)

1988 INTERNATIONAL 1754 Single Axle Van Body Truck, International diesel engine and 5 speed trans, e/w 24' aluminum van body with swing rear doors and electric lift gate, spring suspension, and 255/70R22.5 tires. In fair condition with good tires. (No Title)

1969 FORD C600 Cab Over Van Body Truck, 8 cylinder gas engine, e/w 18' aluminum van body with rollup rear door, and 9.00x20 tires. In poor condition with fair tires. (Not Running)

SCREENING AND ASSORTED AGGREGATE EQUIPMENT

1991 POWERSCREEN Mark II Portable Screen, s/n 2730053, Lister Petter diesel engine, e/w 5'x10' feed hopper with grizzly and belt feeder, topsoil shredder, 24"x36' feed conveyor, 4'x6' double deck screen with (1) screen deck, hydraulic raise, and 7.50R16 tires. In fair to good condition with good tires. (Purchased New)

2007 DBR H1E 4000 16000-3, 5'x12' High Frequency Screen, with structure • **SECO 4820**, Type 2F, 4-Deck 8'x20'Screen, s/n 2F1717 • **GP 5x16**, 3-Deck Screen, s/n GP5143 • **ALLIS CHALMERS 6'x12'6"** Double Deck Screen, s/n B11469

4'x12' Blender/Mixer, 40HP electric motor with Jones dual gear reducer, e/w 24"x9' discharge conveyor and structure with adjustable bases.

BTI BT2000 Hydraulic Demolition Hammer, s/n 2008005, e/w BTI MBS13H pedestal. In good condition.

PULVIMATIC 42" Crusher • (2) 2-Bin Cold Feeds, with 24"x9' belt feeders, electric motors with gear reducers •

(2) Silos, with structure (Sold in Absentia) • (3) **KRUGER 3R-111 Slurry Pumps**, s/n B020183-13, s/n B020183-12, s/n B020183-6, e/w 400GPM, 84' head, 1.15 SG. In good condition. • **DURALINE MLP57075X10 Truck Scale**, s/n 991075, complete with load cells • (2) 20' Metal Stair Towers • 3"x5" Lab Jaw Crusher



'91 POWERSCREEN MARK II



4'X12' BLENDER-MIXER

UNUSED AGGREGATE EQUIPMENT

UNUSED 2007 CEDARAPIDS TSS6203-32, 6'x20' 3-Deck Vibrating Scalping Screen, s/n 54727, 24" bolt-on feed box and screen tower. (No Screen Material)

UNUSED 2007 CFS / SIZETEC VDS512-6, 5'x12' Hi-Frequency De-Watering Screen, s/n T0534, dual Cleveland RE-60-6BK vibrator motors, modular poly screen deck, structure, discharge chute and catwalk. (Missing (8) Filler Screen Modules 12"x24")

UNUSED 2007 CEDARAPIDS 5220-15, 52"x20' Vibrating Grizzly Feeder, s/n 54688, 22" side sheets, (5) 60" adjustable tapered grizzly bars, with Primary Crusher charging hopper (Not Assembled): 50 ton minimum capacity, 20' wide loader hopper, bolt-on wings and rock back box.



UNUSED CEDARAPIDS 6'X20'



UNUSED SURGE BIN AND BELT FEEDER

UNUSED 2007 PRODUCERS SUPPLY 24"x60' Radial Stacker, s/n 2460RSC687-21, 24" deep truss, Trio 425 gear reducer (Running Gear NOT Assembled)

UNUSED 2007 PRODUCERS SUPPLY 24"x60' Transfer Conveyor, s/n 2460TFC690-23, 24" deep truss, 5HP, Trio 425 gear reducer

UNUSED 2007 PRODUCERS SUPPLY 24"x60' Transfer Conveyor, s/n 2460TFC688-22, 24" deep truss, Trio 425 gear reducer

UNUSED 2007 PRODUCERS SUPPLY 24"x60' Transfer Conveyor, s/n 2460TFC688-22, 24" deep truss, Trio 425 gear reducer

UNUSED 2007 PRODUCERS SUPPLY 24"x60' Transfer Conveyor, s/n 2460TFC688-22, 24" deep truss, Trio 425 gear reducer

UNUSED 2007 PRODUCERS SUPPLY 24"x60' Transfer Conveyor, s/n 2460TFC688-22, 24" deep truss, Trio 425 gear reducer

UNUSED KREBS DS20LB, 20" Cyclone, s/n 100051U

UNUSED Control House: 8' wide x 12' long x 8' high, glass on (4) sides, 1" sound suppression package, locking entrance door and lifting eyes, all steel construction.

UNUSED 100 Ton Surge Bin and Belt Feeder, e/w 100 ton cylindrical surge bin, 11'6" dia x 20' h, flat bottom of 1/2" floor plate, 5/16" mild steel main bin, and 2007 Producers Supply 42"x12' belt feeder, s/n 4212BFDR682-15, Dodge gear reducer, 3-ply, 330 PIW belt, with ladder and cage structure.

UNUSED 2007 PRODUCERS SUPPLY 30"x60' Radial Stacker, s/n 3060PRS674-7, 24" deep truss, Trio 425 gear reducer (Running Gear NOT Assembled)

UNUSED 2007 PRODUCERS SUPPLY 24"x60' Radial Stacker, s/n 2460RSC687-21, 24" deep truss, Trio 425 gear reducer (Running Gear NOT Assembled)

UNUSED 2007 PRODUCERS SUPPLY 24"x60' Transfer Conveyor, s/n 2460TFC690-23, 24" deep truss, 5HP, Trio 425 gear reducer

UNUSED 2007 PRODUCERS SUPPLY 24"x60' Transfer Conveyor, s/n 2460TFC688-22, 24" deep truss, Trio 425 gear reducer

UNUSED 2007 PRODUCERS SUPPLY 24"x60' Transfer Conveyor, s/n 2460TFC688-22, 24" deep truss, Trio 425 gear reducer

UNUSED 2007 PRODUCERS SUPPLY 24"x60' Transfer Conveyor, s/n 2460TFC688-22, 24" deep truss, Trio 425 gear reducer

UNUSED 2007 PRODUCERS SUPPLY 24"x60' Transfer Conveyor, s/n 2460TFC688-22, 24" deep truss, Trio 425 gear reducer

UNUSED 2007 PRODUCERS SUPPLY 24"x60' Transfer Conveyor, s/n 2460TFC688-22, 24" deep truss, Trio 425 gear reducer

UNUSED 2007 PRODUCERS SUPPLY 24"x60' Transfer Conveyor, s/n 2460TFC688-22, 24" deep truss, Trio 425 gear reducer

UNUSED 2007 PRODUCERS SUPPLY 24"x60' Transfer Conveyor, s/n 2460TFC688-22, 24" deep truss, Trio 425 gear reducer

UNUSED 2007 PRODUCERS SUPPLY 24"x60' Transfer Conveyor, s/n 2460TFC688-22, 24" deep truss, Trio 425 gear reducer

UNUSED 2007 PRODUCERS SUPPLY 24"x60' Transfer Conveyor, s/n 2460TFC688-22, 24" deep truss, Trio 425 gear reducer

UNUSED 2007 PRODUCERS SUPPLY 24"x60' Transfer Conveyor, s/n 2460TFC688-22, 24" deep truss, Trio 425 gear reducer

UNUSED 2007 PRODUCERS SUPPLY 24"x60' Transfer Conveyor, s/n 2460TFC688-22, 24" deep truss, Trio 425 gear reducer

UNUSED 2007 PRODUCERS SUPPLY 24"x60' Transfer Conveyor, s/n 2460TFC688-22, 24" deep truss, Trio 425 gear reducer

UNUSED 2007 PRODUCERS SUPPLY 24"x60' Transfer Conveyor, s/n 2460TFC688-22, 24" deep truss, Trio 425 gear reducer

UNUSED 2007 PRODUCERS SUPPLY 24"x60' Transfer Conveyor, s/n 2460TFC688-22, 24" deep truss, Trio 425 gear reducer

UNUSED 2007 PRODUCERS SUPPLY 24"x60' Transfer Conveyor, s/n 2460TFC688-22, 24" deep truss, Trio 425 gear reducer

UNUSED 2007 PRODUCERS SUPPLY 24"x60' Transfer Conveyor, s/n 2460TFC688-22, 24" deep truss, Trio 425 gear reducer

UNUSED 2007 PRODUCERS SUPPLY 24"x60' Transfer Conveyor, s/n 2460TFC688-22, 24" deep truss, Trio 425 gear reducer

UNUSED 2007 PRODUCERS SUPPLY 24"x60' Transfer Conveyor, s/n 2460TFC688-22, 24" deep truss, Trio 425 gear reducer

UNUSED 2007 PRODUCERS SUPPLY 24"x60' Transfer Conveyor, s/n 2460TFC688-22, 24" deep truss, Trio 425 gear reducer

UNUSED 2007 PRODUCERS SUPPLY 24"x60' Transfer Conveyor, s/n 2460TFC688-22, 24" deep truss, Trio 425 gear reducer

UNUSED 2007 PRODUCERS SUPPLY 24"x60' Transfer Conveyor, s/n 2460TFC688-22, 24" deep truss, Trio 425 gear reducer

UNUSED 2007 PRODUCERS SUPPLY 24"x60' Transfer Conveyor, s/n 2460TFC688-22, 24" deep truss, Trio 425 gear reducer

UNUSED 2007 PRODUCERS SUPPLY 24"x60' Transfer Conveyor, s/n 2460TFC688-22, 24" deep truss, Trio 425 gear reducer

UNUSED 2007 PRODUCERS SUPPLY 24"x60' Transfer Conveyor, s/n 2460TFC688-22, 24" deep truss, Trio 425 gear reducer

UNUSED 2007 PRODUCERS SUPPLY 24"x60' Transfer Conveyor, s/n 2460TFC688-22, 24" deep truss, Trio 425 gear reducer

UNUSED 2007 PRODUCERS SUPPLY 24"x60' Transfer Conveyor, s/n 2460TFC688-22, 24" deep truss, Trio 425 gear reducer

UNUSED 2007 PRODUCERS SUPPLY 24"x60' Transfer Conveyor, s/n 2460TFC688-22, 24" deep truss, Trio 425 gear reducer

UNUSED 2007 PRODUCERS SUPPLY 24"x60' Transfer Conveyor, s/n 2460TFC688-22, 24" deep truss, Trio 425 gear reducer

UNUSED 2007 PRODUCERS SUPPLY 24"x60' Transfer Conveyor, s/n 2460TFC688-22, 24" deep truss, Trio 425 gear reducer

UNUSED 2007 PRODUCERS SUPPLY 24"x60' Transfer Conveyor, s/n 2460TFC688-22, 24" deep truss, Trio 425 gear reducer

UNUSED 2007 PRODUCERS SUPPLY 24"x60' Transfer Conveyor, s/n 2460TFC688-22, 24" deep truss, Trio 425 gear reducer

UNUSED 2007 PRODUCERS SUPPLY 24"x60' Transfer Conveyor, s/n 2460TFC688-22, 24" deep truss, Trio 425 gear reducer

UNUSED 2007 PRODUCERS SUPPLY 24"x60' Transfer Conveyor, s/n 2460TFC688-22, 24" deep truss, Trio 425 gear reducer

UNUSED 2007 PRODUCERS SUPPLY 24"x60' Transfer Conveyor, s/n 2460TFC688-22, 24" deep truss, Trio 425 gear reducer

UNUSED 2007 PRODUCERS SUPPLY 24"x60' Transfer Conveyor, s/n 2460TFC688-22, 24" deep truss, Trio 425 gear reducer

UNUSED 2007 PRODUCERS SUPPLY 24"x60' Transfer Conveyor, s/n 2460TFC688-22, 24" deep truss, Trio 425 gear reducer

UNUSED 2007 PRODUCERS SUPPLY 24"x60' Transfer Conveyor, s/n 2460TFC688-22, 24" deep truss, Trio 425 gear reducer

UNUSED 2007 PRODUCERS SUPPLY 24"x60' Transfer Conveyor, s/n 2460TFC688-22, 24" deep truss, Trio 425 gear reducer

UNUSED 2007 PRODUCERS SUPPLY 24"x60' Transfer Conveyor, s/n 2460TFC688-22, 24" deep truss, Trio 425 gear reducer

UNUSED 2007 PRODUCERS SUPPLY 24"x60' Transfer Conveyor, s/n 2460TFC688-22, 24" deep truss, Trio 425 gear reducer

UNUSED 2007 PRODUCERS SUPPLY 24"x60' Transfer Conveyor, s/n 2460TFC688-22, 24" deep truss, Trio 425 gear reducer

UNUSED 2007 PRODUCERS SUPPLY 24"x60' Transfer Conveyor, s/n 2460TFC688-22, 24" deep truss, Trio 425 gear reducer

UNUSED 2007 PRODUCERS SUPPLY 24"x60' Transfer Conveyor, s/n 2460TFC688-22, 24" deep truss, Trio 425 gear reducer

UNUSED 2007 PRODUCERS SUPPLY 24"x60' Transfer Conveyor, s/n 2460TFC688-22, 24" deep truss, Trio 425 gear reducer

UNUSED 2007 PRODUCERS SUPPLY 24"x60' Transfer Conveyor, s/n 2460TFC688-22, 24" deep truss, Trio 425 gear reducer

UNUSED 2007 PRODUCERS SUPPLY 24"x60' Transfer Conveyor, s/n 2460TFC688-22, 24" deep truss, Trio 425 gear reducer

GENERATORS

MARATHON 433PSL-1371, 380KW Generator, s/n WA-509790-0597, Cummins KTA-1150 diesel engine, e/w 475KVA, 277/480 volt, 3-phase, Tramount fuel flow monitor, 600 volt main breaker, enclosed in Fruehauf CW25HO2X8 tandem axle rigid neck lowboy trailer, VIN# 32W674401, with (1) 1,400 gallon and (1) 950 gallon fuel tanks. In good condition with good tires.

CATERPILLAR SR-4, 210KW Generator, s/n 5GA00706, Cat 3406 diesel engine, s/n 90U15677, 480 volt, Simplex control system, skid mounted. In fair to good condition.



MARATHON 380KW

BARGE AND BOATS



SELF PROPELLED DUMP BARGE

Mercury 400, 40HP and Mercury 65HP outboard gas motors, e/w single axle trailer. In fair condition with fair tires.

10'5" x 48' x 5'3" Self Propelled Dump Barge, Detroit 4 cylinder diesel engine, e/w hydraulic bottom dump. In good condition. (Gernatt Built New)

27' x 8' Aluminum Work Boat, hull #CUS03024L292, Mercury Black Max 150HP outboard motor, e/w Ezy Loader tandem axle trailer. (Boat Good; Trailer Fair with Good Tires)

SEA SPRITE 13.5' Fiberglass Boat, Mercury 400, 40HP and Mercury 65HP outboard gas motors, e/w single axle trailer. In fair condition with fair tires.