

1440 COWPATH RD. • HATFIELD, PA 19440
215/361-9099 • Fax: 215/361-9212
www.hunyady.com



'96 TESMEC TRS900-SLO



'01 BANDIT 1900



'07 SOOSAN SD-1000E

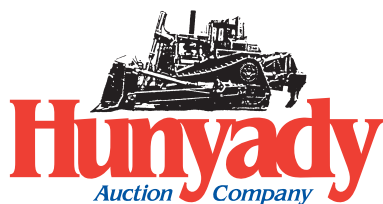
PRE-SORTED
FIRST CLASS MAIL
US POSTAGE
PAID
UPPER DARBY, PA
PERMIT #45



ABSOLUTE AUCTION RETIREMENT LIQUIDATION



WEDNESDAY, NOVEMBER 20, 2019 - 9:00AM
Export, Pennsylvania



Online Bidding Powered By proxibid

Please visit our website at
www.hunyady.com
Full Photo Library Available

NOTICE: Since 1972, Kukurin Contracting, Inc. (KCI) has provided quality construction services including municipal water & sewer lines, water & sewage treatment plants, dams, bridges and road construction, and many other services. Following a lifetime of successful projects, Bill Kukurin Sr. has decided to retire and pass along this well established family owned company to the next generation, his son Billy. KCI will continue to provide the very best in construction services for decades to come. Moving forward, KCI has decided to sell at auction equipment and assets that are surplus to their present needs. Everything in the auction is owned by Kukurin Contracting, Inc. All items will sell at Absolute Auction to the highest bidder, without minimums, reserves, or buyer's premium.

Location: The auction will be held at the Kukurin office/yard facility located at 1169 Route 286, Export, PA 15632.

Directions: FROM THE INTERSECTION OF US ROUTE 22 AND PA ROUTE 66 IN DELMONT: Proceed onto PA Route 66 North for (7.6) miles and turn right following signs to PA Route 286 West. Turn right onto PA Route 286 West. Continue (1.2) miles to sale site on right.

Sale Day Parking: There will be remote parking on the day of the auction, approximately (0.5) miles East of the auction site on Route 286.

Online Bidding: Live internet bidding will be provided by Proxibid. Proxibid will charge an Internet Service Provider Fee of 5% to the successful internet bidder for items over \$10,000 and 10% for items \$10,000 and under, for each lot purchased on-line. All interested internet bidders are required to register w/Proxibid 24 hours prior to the auction at www.proxibid.com/hunyady or call 877-505-7770.

Terms: Payment in full is required on sale day by cash, certified funds, or check with a bank letter of guarantee. Sample letter of guarantee: "We hereby guarantee the payment of our customer _____ written on his account up to _____ dollars for purchases at your auction sale on November 20, 2019". All guaranteed checks should be made payable to Hunyady Auction Co.

Sales Tax: Since this contractor is selling items not normally sold in the course of his business, the Commonwealth of Pennsylvania considers this an isolated sale and does not require the auction company to collect sales tax.

Financing: Financing is available, please contact Susan (215) 361-9099 at the auction company for details.

Inspection: Items will be available for inspection one week prior from 8:00AM to 4:00PM, or sale day morning beginning at 7:00AM. The site will be closed Saturday and Sunday, November 16 and 17th.

Removal: After complete payment, all sale items may be removed on sale day as long as the removal activity is not disruptive to the sale and only until 5:00PM. Items may also be removed Thursday and Friday, November 21st and 22nd and Monday thru Wednesday, November 25th thru November 27th, from 8:00AM until 4:00PM. All items must be removed no later than Wednesday, November 27, 2019 by 12:00 NOON.

Sale Site Phone: (800) BID-N-BUY • Sale Site Fax: (215) 361-9212

DUMP TRUCKS

1998 MACK CS300P Single Axle Dump Truck, Renault 6 cylinder dsl engine and 6 speed transmission, e/w 10' steel dump body, spring suspension, tow package, and 11R22.5 tires. In fair to good condition with fair to good tires.



'98 MACK CS300P

2002 STERLING Single Axle Dump Truck, Cat dsl engine and automatic transmission, e/w J&J 10' aluminum dump body with chute, plow frame, air brakes, tow package, 23,000# rear and 16,000# front axle, 39,000# GVWR, heated mirrors, driver's side power window and mirror, ac, cruise control, and 315/80R22.5 tires. In fair to good condition with good tires.

1998 CHEVROLET C6500 Dump/Compressor Truck, Cat dsl engine and 6 speed transmission, e/w 12' steel dump body, Sullivan behind cab air compressor, 4 cylinder dsl engine, 25,950# GVWR, air brakes, tow package with air, ac, and 255/70R225 tires. In fair to good condition with good tires.

1998 MACK RD688S Tri-Axle Dump Truck, Mack dsl engine and Maxitorque transmission, e/w 16'6" steel dump body, engine brake, airlift 3rd axle, camelback suspension, tow package with air, and ac. (2 Tires Removed)

4x4 ALL-TERRAIN VEHICLE

NEW HOLLAND 120, 4x4 All-Terrain Vehicle, s/n CM1120-195321, Kubota 3 cylinder dsl engine and shuttle transmission, e/w 48" bed, enclosed cab, tow package, and 25x10.50-12 tires. In good condition with good tires.



NEW HOLLAND 120 4X4

PICKUPS, CAB AND CHASSIS, AND STEP VAN

2009 **FORD F-150XL**, 4x4 Extended Cab Pickup Truck, Triton 5.4L gas • 2008 **CHEVROLET/ISUZU** Extended Cab Pickup Truck, 2.9L gas • 2007 **FORD F-250** Lariat Super Duty 4x4 Extended Cab Pickup Truck, Powerstroke dsl • 2007 **GMC** Single Axle Cab and Chassis, dsl • 2008 **FORD F-550XL** Super Duty, 4x4 Extended Cab Cab and Chassis, Powerstroke 6.4L dsl engine • 2008 **FORD F-450XL** Super Duty Extended Cab Cab & Chassis, Powerstroke dsl (Not Running; Bad Transmission) • 2003 **FORD F-550XL** Super Duty Cab and Chassis, Powerstroke dsl (Not Running) • 1995 **GMC/GRUMMAN** Step Van, dsl

FLATBED, OFFICE, AND UTILITY TRAILERS

1997 UTILITY FS2CHE, 45' Tandem Axle Flatbed Trailer, e/w ratchet straps, sliding tandems, spring suspension, 80,000# GVWR. In fair condition with fair tires.

Office Trailers: 10'x50' • 12'x45' • 8'x36' • (4) 8'x35' • 8'x30' • 8'x19'
2005 **PACE AMERICAN** WS610SHD, 6'x10' Single Axle Enclosed Utility Trailer • **HAULMARK** 8'x24' Tandem Axle Enclosed Utility Trailer

SEWER AND WATER CONTRACTOR TOOLS AND EQUIPMENT

MCELROY LT004B, 6" Skid Mounted Line Tamer • **MCELROY** 6" Portable Line Tamer, Honda 5HP gas • Hydraulic Test Bore Drill, Onan gas engine, e/w auger, skid mounted • Portable Rebar Bender, Honda gas • **LARGE QUANTITY** Gas Powered Pumps, Generators, and Pipe Tools • Piercing Tools • Tapping Machines and Accessories, up to 16"

MISCELLANEOUS

LARGE QUANTITY Symons Handset Panel Forms • Portable Pneumatic Concrete Mixer • (2) 5,240 Gallon Skid Mounted Fuel Tanks • 500 Gallon Skid Mounted Fuel Tank • **SCREEN MACHINE** 24"x40' Hydraulic Stacking Conveyor • **POWERSCREEN** 30"x48' Hydraulic Stacking Conveyor • 5" Rubber and Steel Slick Line • Headache Balls • **ROCKWELL** EET-1 Pedestal Drill, 3-phase electric • **ENCO** CK-1-1/2TM Turret Milling Machine • 30 Ton Shop Press • (3) Radial Arm Saws • Table Saw • Horizontal Band Saw

FUEL AND WATER TRUCKS AND MOBILE SWEEPERS

1987 INTERNATIONAL 1954 Single Axle Fuel Truck, International dsl engine and 5 speed transmission with 2 speed rear axle, e/w Trans-Tec 2,800 gallon 3-compartment aluminum fuel tank, rear mounted hose reel, meter and ticket printer, air brakes, 188" wheelbase, and 11R22.5 tires. In fair condition with fair to good tires.



'94 FORD WITH 2,200 GALLON

1994 FORD Single Axle Cab Over Water Truck, Ford/Cummins dsl engine and automatic transmission, e/w Etnyre 2,200 gallon steel water tank, 4" hydraulic pump, 4" centrifugal gas powered pump, front spray bar, curbside spray nozzle, spring suspension, 36,000# GVWR, heated mirrors, and 11R22.5 tires. In fair to good condition with fair tires.

1997 ELGIN Whirlwind Sweeper, s/n L2535D •

1992 Peabody Myers Sunvac III Sweeper, s/n 9212S-597

(13) HYDRAULIC EXCAVATORS AND ATTACHMENTS

2010 VOLVO ECR235C, s/n 110375, Volvo D6E-EAE3 dsl engine and hydraulic drive, e/w 9'9" dipper stick, digging bucket, multi-function auxiliary hydraulics, hydraulic coupler, rearview camera, EROPS with heat and ac, and 32" TBG pads. In good condition with good u/c.

2010 VOLVO ECR235C, s/n 110373, Volvo D6E-EAE3 dsl engine and hydraulic drive, e/w 9'9" dipper stick, digging bucket, multi-function auxiliary hydraulics, hydraulic coupler, rearview camera, EROPS with heat and ac, and 32" TBG pads. In good condition with good u/c.

2004 KOMATSU PC308USLC-3, s/n 20036, Komatsu dsl engine and hydraulic drive, e/w 10' dipper stick, digging bucket, auxiliary hydraulics, JRB hydraulic coupler, EROPS with heat and ac, and 31.5" TBG pads. In good condition with good u/c.



'04 CAT 330CL

2003 JOHN DEERE 225CLC RTS, s/n 500042, Isuzu dsl engine and hydraulic drive, e/w 10' dipper stick, digging bucket, auxiliary hydraulics, Hendrix hydraulic coupler, thumb bracket, EROPS with heat, and 31.5" TBG pads. In good condition with fair to good u/c.

'03 JD 225CLC RTS



2001 KOBELCO SK210LC, s/n YQ07U-0430, Mitsubishi dsl engine and hydraulic drive, e/w 9'6" dipper stick, digging bucket, auxiliary hydraulics, thumb bracket, EROPS with heat and ac, and 31.5" TBG pads. In fair to good condition with fair to good u/c.

'01 KOBELCO SK210LC



(1) OF (2) '10 VOLVO ECR235C



'04 KOMATSU PC308USLC-3

2004 CATERPILLAR 330CL, s/n DKY02573, Cat dsl engine and hydraulic drive, e/w 9' dipper stick, digging bucket, auxiliary hydraulics, Cat hydraulic coupler, thumb bracket, EROPS with heat and ac, and 33.5" TBG pads. In good condition with good u/c.



1998 CATERPILLAR 345BL, s/n 4SS01079, Cat dsl engine and hydraulic drive, e/w 10' dipper stick, digging bucket, auxiliary hydraulics, Hendrix hydraulic coupler, thumb bracket, EROPS with heat and ac, and 35.5" TBG pads. In good condition with fair to good u/c.



'98 CAT 345BL

2003 LINK-BELT 160LX, s/n 160Q3-1357, Isuzu dsl engine and hydraulic drive, e/w 9' dipper stick, digging bucket, auxiliary hydraulics, hydraulic coupler, EROPS with heat and ac, and 23.5" TBG pads. In good condition with good u/c.

2005 LINK-BELT 135 Spin Ace, s/n EBAJ59472, dsl engine and hydraulic drive, e/w 9' dipper stick, auxiliary hydraulics, 8'9" backfill blade, EROPS with heat and ac, and 23.5" street pads.



'96 HITACHI EX135UR



'07 TAKEUCHI TB1140

In good condition with fair u/c.

1996 HITACHI EX135UR, s/n 1ED-01304, dsl engine and hydraulic drive, e/w swing boom, 7'2" dipper stick, digging bucket, auxiliary hydraulics, hydraulic coupler, backfill blade, EROPS with heat and ac, and 19.5" TBG pads. In good condition with good u/c.

2002 CATERPILLAR 312C, s/n CAE01326, Cat dsl engine and hydraulic drive, e/w 9'6" dipper stick, digging bucket, auxiliary hydraulics, JB Hendrix hydraulic coupler, EROPS with heat and ac, and 27.5" TBG pads. In fair to good condition with good u/c.

2007 TAKEUCHI TB1140, s/n 51401028, Isuzu 4 cylinder dsl engine and hydraulic drive, e/w swing boom, 8'6" dipper stick, digging bucket, auxiliary hydraulics, manual coupler, 8'6" backfill blade, EROPS with heat and ac, and 23.5" TBG pads. In good condition with good u/c.

VERY LARGE QUANTITY Excavator Attachments: Demo Hammers • Frost Tooth Attachments • Digging Buckets • Cleanup Buckets • Dipper Sticks



'98 CAT 345BL

1998 CATERPILLAR 345BL, s/n 4SS00689, Cat dsl engine and hydraulic drive, e/w 10' dipper stick, digging bucket, auxiliary hydraulics, hydraulic coupler, hydraulic counterweight removal, EROPS with heat and ac, and 35.5" TBG pads. In fair to good condition with fair to good u/c.

2003 LINK-BELT 160LX, s/n 160Q3-1357, Isuzu dsl engine and hydraulic drive, e/w 9' dipper stick, digging bucket, auxiliary hydraulics, hydraulic coupler, EROPS with heat and ac, and 23.5" TBG pads. In good condition with good u/c.



'05 LINK-BELT 135

2002 CATERPILLAR 312C, s/n CAE01326, Cat dsl engine and hydraulic drive, e/w 9'6" dipper stick, digging bucket, auxiliary hydraulics, JB Hendrix hydraulic coupler, EROPS with heat and ac, and 27.5" TBG pads. In fair to good condition with good u/c.

2007 TAKEUCHI TB1140, s/n 51401028, Isuzu 4 cylinder dsl engine and hydraulic drive, e/w swing boom, 8'6" dipper stick, digging bucket, auxiliary hydraulics, manual coupler, 8'6" backfill blade, EROPS with heat and ac, and 23.5" TBG pads. In good condition with good u/c.



'02 CAT 312C

(6) MINI EXCAVATORS AND ATTACHMENTS



'07 KOMATSU PC78US-6NO

s/n 1836, Komatsu S4D95LE-3 dsl engine and hydraulic drive, e/w swing boom, 7'3" dipper stick, digging bucket, auxiliary hydraulics, Geith hydraulic coupler, 91" backfill blade, EROPS with heat and ac, and 18" TBG pads. In good condition with good u/c.



'05 HYUNDAI ROBEX 55-7

2007 KOMATSU PC78US-6NO Hydraulic Mini Excavator, s/n 8028, Komatsu dsl engine and hydraulic drive, e/w 5'4" dipper stick, digging bucket, Geith mechanical thumb, auxiliary hydraulics, JRB hydraulic coupler, 91" backfill blade, EROPS with ac, and 18" TBG pads. In good condition with good u/c.

2007 KOMATSU PC78MR-6 Hydraulic Mini Excavator, s/n 1836, Komatsu S4D95LE-3 dsl engine and hydraulic drive, e/w swing boom, 7'3" dipper stick, digging bucket, auxiliary hydraulics, Geith hydraulic coupler, 91" backfill blade, EROPS with heat and ac, and 19" street pads. In good condition with good tracks.

2005 HYUNDAI Robex 55-7 Hydraulic Mini Excavator, s/n M80111327, Yanmar 4 cylinder dsl engine and hydraulic drive, e/w swing boom, 7'2" dipper stick, digging bucket, dual function auxiliary hydraulics, manual coupler, 76" backfill blade, thumb bracket, and 15.5" rubber tracks. In good condition with good tracks.



'07 KOMATSU PC78MR-6



'02 IHI 45NX

hydraulics, 57" backfill blade, ROPS canopy, and 12" rubber tracks. In fair to good condition with good tracks.

2005 TAKEUCHI TB16 Hydraulic Mini Excavator, s/n 11609333, 3 cylinder dsl engine and hydraulic drive, e/w swing boom, 44" dipper stick, digging bucket, 38" backfill blade, ROPS canopy, and 9" rubber tracks. In good condition with good tracks.

Assorted Digging Buckets

2002 IHI 45NX Hydraulic Mini Excavator, s/n WG000597, dsl engine and hydraulic drive, e/w swing boom, 66" dipper stick, digging bucket, auxiliary hydraulics, 77" backfill blade, and 16" rubber tracks. In good condition with good tracks.

1996 AIRMAN AX25-2 Hydraulic Mini Excavator, s/n 847B020444, Kubota dsl engine and hydraulic drive, e/w swing boom, 58" dipper stick, digging bucket, auxiliary



'05 TAKEUCHI TB16

CRAWLER TRACTORS AND PULL SCRAPER



2005 CATERPILLAR D5GXL Crawler Tractor, s/n WGB02381, Cat 3046 dsl engine and hydrostatic transmission, e/w 6-way straight blade, Cat PA40 hydraulic winch, s/n 0401348, EROPS with sweeps, heat and ac, and 20" SBG pads. In good condition with fair to good u/c.
CATERPILLAR D8K Crawler Tractor, s/n 77V7026, Cat D342 dsl engine and powershift transmission, e/w straight blade with tilt, rear

05 CAT D5GXL

mounted Grace Track Service GT90-6 hydraulic system with (3 sets) of hydraulic outlets, drawbar, ROPS canopy with sweeps, and 28" SBG pads. In good condition with fair u/c.
CATERPILLAR No. 80 Hydraulic Pull Scraper, s/n 5W177, e/w rear push block and 21.00-24 tires. In fair condition with fair tires.

CAT D8K



RUBBER TIRED LOADER, TRACTOR LOADER BACKHOES, AND ATTACHMENTS

2011 VOLVO L70F Rubber Tired Loader, s/n 26080, Volvo D6E-LBE3 dsl engine and powershift transmission with auto shift, e/w Volvo general purpose loader bucket with bolt-on cutting edge, auxiliary hydraulics, hydraulic coupler, rearview camera, heated power mirrors, EROPS with heat and ac, and 20.5R25 tires. In good condition with good tires.

2009 JOHN DEERE 410J, 4x4 Tractor Loader Extend-A-Hoe, s/n 177819, John Deere 4 cylinder dsl engine and powershift transmission, e/w 4 in 1 loader bucket with hanging forks, manual coupler, EROPS with heat and ac, 12.5/80-18 front and 21Lx24 rear tires. In good condition with good tires.

2005 CATERPILLAR 420D IT, 4x4 Tractor Loader Extend-A-Hoe, s/n BLN12129, Cat dsl engine and shuttle transmission, e/w general purpose loader bucket with bolt-on cutting edge, 18" digging bucket, front hydraulic coupler, front auxiliary hydraulics, joystick backhoe controls, EROPS with heat, 12.5-18 front and 19.5-24 rear tires. In good condition with fair to good tires.

1998 CATERPILLAR 426C IT, 4x4 Tractor Loader Extend-A-Hoe, s/n 1YR00708, dsl engine and shuttle transmission, e/w general purpose loader bucket with bolt-on cutting edge, 24" digging bucket, front hydraulic coupler, front auxiliary hydraulics, EROPS, 12.5/80-18 front and 19.5-24 rear tires. In good condition with fair tires.

1997 CATERPILLAR 426C IT, 4x4 Tractor Loader Extend-A-Hoe, s/n 1YR00502, dsl engine and shuttle transmission, e/w general purpose loader bucket with bolt-on cutting edge, 24" digging bucket, front hydraulic coupler, rear manual coupler, front auxiliary hydraulics, EROPS, 12.5/80-18 front and 19.5-24 rear tires. In good condition with fair to good and (1) very good tires.

Loader Attachments: VERMEER TS60S Hydraulic Tree Spade Attachment • (3) ACS 84" Heavy Duty Fork Attachments • Assorted Broom and Root Rake Attachments • General Purpose Loader Buckets
Backhoe Attachments: CAT 24" Digging Bucket (Cat 430) • 48" Cleanup, 36" & 24" Digging Buckets (Cat 426) • Hydraulic 4-in-1 Loader Bucket (Cat 426) • Assorted Digging and Cleanup Buckets



11 VOLVO L70F



09 JD 410J 4X4



05 CAT 420D IT 4X4



98 CAT 426C IT 4X4

SKID STEER LOADERS AND ATTACHMENTS

2017 MUSTANG 2500RT Crawler Skid Steer Loader, s/n 00085032, dsl engine and hydrostatic transmission, e/w general purpose loader bucket, auxiliary hydraulics, enclosed cab with heat and ac, and rubber tracks. In good condition with good tracks. (352 Hours)

2004 BOBCAT S185 Skid Steer Loader, s/n 525012108, Kubota 4 cylinder dsl engine and hydrostatic transmission, e/w auxiliary hydraulics, manual coupler and 12-16.5 tires. In good condition with fair to good tires.

2000 NEW HOLLAND LS180 Skid Steer Loader, s/n 183928, New Holland 4 cylinder dsl engine and hydrostatic transmission, e/w high flow hydraulics, manual coupler, and 12-16.5 tires. In good condition with good tires.

2002 JOHN DEERE 260 Skid Steer Loader, s/n 460776, John Deere 2.9L dsl engine and hydrostatic transmission, e/w high flow hydraulics, manual coupler, and 12-16.5 tires. In good condition with good tires.

2005 JOHN DEERE 332 Skid Steer Loader, s/n 113962, dsl engine and hydrostatic transmission, e/w high flow auxiliary hydraulics, manual coupler, enclosed cab (missing door) with ac, and 14-17.5 tires. In good condition with good tires.

VERMEER TS30 Hydraulic Tree Spade Attachment, s/n 1192

LARGE QUANTITY: Rock Saws • Brooms • Hydraulic Angle Blades • Root Rakes • Landscape Rakes • Cold Planer Attachments • Grapple Attachments • Trencher Attachments • Loader Buckets • Fork Attachments



04 BOBCAT S185



02 JD 260



05 JD 332

COMPACTORS

2005 INGERSOLL RAND SD100F-TF Vibratory Padfoot Compactor, s/n 182792, Cummins dsl engine and hydrostatic transmission, e/w 84" padfoot drum, EROPS with heat and ac, and 23.1-26 tires. In good condition with fair tires.

2005 VIBROMAX VM66PD Vibratory Padfoot Compactor, s/n JKC9441609, Cummins B3.3 dsl engine and hydrostatic transmission, e/w 70" padfoot drum, ROPS canopy, and 14.9R24 tires. In good condition with good tires.

1997 COMPAC T50PDB Vibratory Padfoot Compactor, s/n 975022, John Deere 3029 dsl engine and hydrostatic transmission, e/w 60" padfoot drum, 72" backfill blade, ROPS canopy, and 16.5-16.1 tires. In good condition with fair tires.

1999 RAMMAX S35K2B Vibratory Compactor, s/n 527978, dsl engine and hydrostatic transmission, e/w 35.5" smooth drum, 43" backfill blade, ROPS canopy, and 7.50-18 tires. In fair to good condition with fair to good tires.

1972 CATERPILLAR 815 Soil Compactor, s/n 91P313, Cat dsl engine and powershift transmission, e/w 37" padfoot compactor wheels with bolt-on feet, backfill blade, and EROPS. In fair to good condition.

MUELLER T118 Soil Compactor, s/n 9509, Cat 3208 dsl engine and powershift transmission, e/w 36" padfoot compactor wheels with weld-on feet, 9' backfill blade, and ROPS canopy with sweeps. In good condition.



05 IR SD100F-TF



05 VIBROMAX VM66PD



97 COMPAC T50PDB

MOTOR SCRAPER AND CRAWLER DUMPERS

1981 TEREX TS-14B Tandem Motor Scraper, s/n 69644, (2) Detroit dsl engines and powershift transmission, e/w ROPS canopy and 29.5-25 tires. In fair to good condition with fair to good tires.



85 YANMAR

1985 YANMAR Crawler Dumper, s/n Unknown, Yanmar 4 cylinder dsl engine and hydraulic drive, e/w 8' dump body with flip-down sides, canopy, and 19.5" rubber tracks. In fair condition with good tracks.

1998 MAROOKA MST-2300 Crawler Dumper, s/n 233150, (Not Running) • **1995 MAROOKA MST-2200 Crawler Dumper**, s/n 221233, (Not Running) • **1994 HITACHI CG100 CRAWLER DUMPER**, s/n 808-0197, (Not Running; Engine Seized)

ALL TERRAIN CRANE AND BOOM TRUCKS

1993 GROVE AT-750B TM750B, 50 Ton All Terrain Crane, s/n 78285, Cummins LTA10-C dsl engine, e/w 35'-110' 4-section hydraulic boom, main and auxiliary hoists, Johnson 35 ton 2-sheave hook block, 7.5 ton ball, PAT DS350GW LMI and anti-2 block system, propane heated cab, mounted on 1993 Grove 8850G, 8x8 carrier, 6 speed automatic transmission with 2 speed reverse, Jacobs 2-position engine brake, (4) hydraulic outriggers, and 17.5R25 tires. In good condition. (Road Worthiness of Tires Questionable)



'93 GROVE AT-750B

1998 VOLVO Tri-Axle Boom Truck, Cat 3306C, 300HP dsl engine and Fuller 9 speed transmission, e/w 1998 Manitex 2277, 22 ton boom, s/n 36642, 29' - 77' 3-section hydraulic boom, single sheave hook block, 22' steel flatbed with ratchet straps, 40,000# rears, 20,000# front axle, spring/walking beam suspension, Jacobs 2-stage engine brake, ac, (4) hydraulic outriggers, 425/65R22.5 front, 255/70R22.5 tag, and 11R22.5 rear tires. In good condition with good tires.



'98 VOLVO WITH MANITEX 22 TON

1994 FORD F-700 Single Axle Boom Truck, dsl engine and 5 speed transmission with 2 speed rear, e/w 1994 JLG 1250JBT, 12.5 ton boom, s/n 0400002705, with 22.6' - 56' 3-section hydraulic boom, weighted hook, anti-two block, 20' flatbed, 21,000# rear and 12,000# front axle, spring suspension, 33,000# GVWR, (4) hydraulic outriggers, and 11R22.5 tires. In fair to good condition with fair to good tires.



'94 FORD WITH JLG 12.5 TON

1997 VOLVO WG64 Tandem Axle Knuckleboom Truck, Cat 3306C, 300HP dsl engine and Eaton Fuller RTX-11609B, 9 speed transmission, e/w 1997 Gormagh 28000 knuckleboom, s/n 321807, with (3) folding section. (5) telescopic sections, 22'6" steel flatbed, 45,000# rears, 18,000# front axle, spring/beam suspension, 63,000# GVWR, air ride seat, (2) hydraulic outriggers, heated mirrors, ac, 315/80R22.5 front and 11R22.5 rear tires. In good condition with good front and fair rear tires.

PILE HAMMERS

MKT DE50B Diesel Pile Hammer, s/n 81608, e/w leads. (Unit #PD05) • **DELMAG D22 Diesel Pile Hammer,** s/n 2008, e/w leads.



(1) OF (2) DIESEL PILE HAMMERS

CRAWLER DRILL



2007 SOOSAN SD-1000E Crawler Hydraulic Drill, s/n 524, Cummins dsl engine and hydraulic drive, e/w dust collector, EROPS with heat and ac, and 13.5" SBG pads. In good condition with good u/c. (00,881 Hours)

'07 SOOSAN SD-1000E

HORIZONTAL BORING MACHINES

2003 AMERICAN AUGERS 42-600 Horizontal Boring Machine, s/n NG42600790503, Deutz dsl engine and direct drive transmission, e/w hydraulic winch. In good condition.

1998 BARBCO 30/36-200 Horizontal Boring Machine, s/n 30-36/200049815, dsl engine. In good condition.

AMERICAN AUGERS 36-600-S Quick Split Horizontal Boring Machine, Deutz dsl engine and direct drive transmission. In fair to good condition.

AMERICAN AUGERS 24-70D Horizontal Boring Machine, s/n 2470D0786107, Lombardini 2 cylinder dsl engine and direct drive transmission. In fair to poor condition.

RICHMOND 24D Horizontal Boring Machine • BOR-IT 24" Horizontal Boring Machine • (2) AUGERS UNLIMITED Horizontal Boring Machines • Horizontal Hydraulic Boring Machine • LARGE QUANTITY Augers, up to 24"



'03 AMERICAN AUGERS 42-600

TRENCHERS AND EARTH SAW

1996 TESMEC TRS900-SLO Crawler Trencher, s/n 9169, Cummins 6CTA8.3-P dsl engine and hydraulic drive, e/w 9' trencher bar with hydraulic crumber, side discharge conveyor, hydraulic stabilizers, and 20" TBG pads. In good condition with good u/c.



'96 TESMEC TRS900-SLO

1989 VERMEER T650 Crawler Trencher, s/n 1VRL250S8K1000344, Detroit 8.2L dsl engine and hydraulic drive, e/w 6.5"x7' trencher bar with hydraulic crumber,



CASE 360

side discharge conveyor, and 24" TBG pads. In good condition with good u/c.

CASE 360 Rubber Tired Trencher, s/n JAF0316702, Deutz dsl engine and hydrostatic transmission, e/w 48" trencher bar with crumber, 60" backfill blade with hydraulic angle, ROPS post, and 26x12.00-12 tires. In good condition with good tires.

1994 DITCH WITCH 7610DD Combination Trencher/Backhoe, s/n 5L0426, Deutz 4 cylinder dsl engine and direct drive transmission, e/w A615 trencher attachment with 9' trencher bar, A620 backhoe attachment, with 12" digging bucket and (2) hydraulic outriggers, 72" backfill blade with hydraulic angle, and roll bar. In fair to good condition with fair tires.

1997 VERMEER LM42 Combination Trencher/Cable Plow, s/n 1VRM112LXV1001007, Deutz dsl engine and hydrostatic transmission, e/w 60" trencher bar, VP40 cable plow attachment. In good condition.

1990 VERMEER LM35 Combination Trencher/Cable Plow, s/n 1VRF062A1L1000901, Deutz dsl engine and hydrostatic transmission, e/w 48" trencher bar, LP18 cable plow attachment. In fair to good condition.



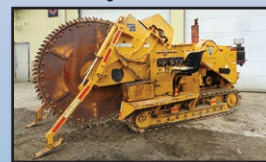
(2) '05 VERMEER RT100

(2) 2005 VERMEER RT100 Walk Behind Trenchers, Honda 13HP gas engine and hydrostatic transmission, e/w 36" trencher bar and 16x6.50-8 tires. In good condition with good tires.

BURKEEN B-30 Walk Behind Combination Trencher/Cable Plow, s/n 330889, Hatz dsl engine and hydrostatic transmission, e/w 4' trencher bar. In fair to good condition.

1998 VERMEER TC4A Trench Compactor, Hatz 2 cylinder dsl engine and hydrostatic transmission, e/w 6"x44" compaction wheel. In good condition with fair tires.

1999 VERMEER TC4A Trench Compactor, Hatz 2 cylinder dsl engine and hydrostatic transmission, e/w 6"x44" compaction wheel. In fair to good condition with fair to good tires.



VERMEER T-500C

MCCULLOUGH Coverup 40" Walk Behind Trench Backfill Machine, Honda 5HP gas engine and hydrostatic transmission.

VERMEER T-500C Crawler Earth Saw, s/n 958, Detroit dsl engine and hydraulic drive, e/w 96" cutting wheel and 10" smooth pads. In fair condition with fair to good pads.

DIRECTIONAL BORING MACHINE, MIXING SYSTEM, PIPE PUSHER, AND VACUUM TRAILER

1998 DITCH WITCH JT1720 Directional Boring Machine, s/n 2R2753, John Deere dsl engine and hydraulic drive, e/w (35) 10' drill rods, front screw augers, (2) rear hydraulic stabilizers, and rubber tracks. In good condition with good tracks.

DITCH WITCH JT2720 Directional Boring Machine, Cummins 4 cylinder dsl engine and hydraulic drive, e/w (37) 10' drill rods, front screw augers, (2) rear hydraulic stabilizers and 12" rubber tracks.

2000 VERMEER ST750A, 750 Gallon Bentonite Mixing System, Kohler 23.5HP gas engine, skid mounted. In good condition.

Hydraulic Pipe Pusher, Kubota 4 cylinder dsl engine power unit, e/w (50 pieces) 1.5"x5' pipe, umbilical remote, mounted on 2006 Cronkrite single axle tilt deck trailer, with 75"x12' level deck.

DRESSER T510SR Tandem Axle Vacuum Trailer, Ford 4 cylinder gas engine, e/w pressure steel tank with hydraulic dump, Roots blower, Deutz 2 cylinder dsl engine, and 225/75R15 tires. In good condition with good tires.

PORTABLE CHIPPERS AND CRAWLER MULCHER



'99 BANDIT 1850XP

and 11R17.5 tires. In good condition with good tires.

2006 FECON Model FTX130-FM Crawler Mulcher, s/n 0270406, powered by Deutz dsl engine and hydrostatic transmission, equipped with 54" mulching head, EROPS cab with heat and ac. In good condition with good u/c. (1,902 Hours)



'06 FECON FTX130-FM

2001 BANDIT 1900 Crawler Chipper, s/n 1079, cat 3406 dsl engine and hydraulic drive, e/w loader boom with rotating grapple, hydraulic rotating chute, enclosed operators cab, and 27.5" TBG pads. In good condition with good u/c.
1999 BANDIT 1850XP Portable Chipper, s/n 000360, John Deere 6 cylinder dsl engine, e/w loader boom with rotating grapple, hydraulic rotating chute, enclosed operators cab with heat,

BARK BLOWER, BALE PROCESSOR, STRAW BLOWER, AND HYDROSEEDER

2006 FINN BB-302 Portable Bark Blower, s/n SN-885, Kubota 4 cylinder dsl engine, e/w hose reel, tandem axle trailer with 175/80R13 tires. In good condition with good tires.

1999 DURATECH 2544 Bale Processor, s/n I10244, with 31x13.50-15 tires. In good condition with good tires. (PTO/Hydraulic Powered)

1987 FINN B70 Portable Straw Blower, s/n BU-1339, 4 cylinder dsl engine, e/w 205/75R15 tires. In fair to good condition with fair to good tires.

1997 FINN T80 Portable Hydroseeder, s/n BU-1255, Hatz 2 cylinder dsl engine, e/w 9-14.5 tires. In fair to poor condition with fair tires.



'06 FINN BB-302

CRAWLER ASPHALT PAVERS

1999 GEHL 1448 Power Box Crawler Asphalt Paver, s/n 100317312, 3 cylinder dsl engine and hydrostatic transmission, e/w 8' screed and 12" pads. In good condition.

ALLAT 450P Crawler Asphalt Paver, s/n 87F2290, 4 cylinder dsl engine and hydrostatic transmission, e/w 5'-7"6" heated screed. In fair to good condition with good u/c.

CYCLOMILL Tow Behind Milling Machine, Cummins B5.9-C dsl engine, e/w 48" cutting drum and rear discharge conveyor. In fair condition.

BLAW KNOX RW100 Road Widener, s/n 10009-03, John Deere dsl engine and hydrostatic transmission, e/w 10' conveyor and 385/65R22.5 tires. In good condition with fair tires.



BLAW KNOX RW100

TACK MELTERS/APPLICATORS

1995 CRACKPRO 400 Tack Melter/Applicator, s/n 951521005, Kubota 3 cylinder dsl engine • (2) **1995 & 1993 CRAFCO EZ Pour 200 Gallon Tack Melter/Applicators**, Isuzu 3 cylinder dsl engine • **2004 GARLOCK Genesis 612 Portable Tar Kettle**, Honda 9HP gas engine • **NEAL Asphalt Heater**



CAT V50-B 5,000#

and 6.50x10 rear tires. In fair condition with good tires.

1986 ECONOMY SPL-2660, 26' Scissor Lift, s/n JH-71216, battery powered, hydrostatic transmission, e/w 750# capacity. In fair condition with fair to poor tires.

FORKLIFTS AND SCISSOR LIFT

CATERPILLAR V50-B, 5,000# Pneumatic Tired Forklift, s/n 79M3625, 4 cylinder LP gas engine and hydrostatic transmission, e/w 157" 3-stage mast, side shift, 42" forks, canopy, 7.00-15 front and 6.50-10 rear tires. In good condition with fair tires.

1989 CLARK DPS301, 4,450# Pneumatic Tired Forklift, s/n GP1381-0024-6817FA, 4 cylinder dsl engine and shuttle transmission, e/w 188" 3-stage mast, side shift, 42" forks, FOPS canopy, 28x9-15 front

TRASH PUMP AND POWER UNITS

GORMAN RUPP T8A3-B, 8" Skid Mounted Trash Pump, s/n 530526, John Deere 6059 dsl engine. In good condition • **MAC 10T Portable Hydraulic Power Unit**, s/n 442, 6 cylinder dsl engine. In fair to good condition • **THOMPSON Skid Mounted Hydraulic Power Unit**, s/n 32HPU78, 4 cylinder dsl engine. In good condition.

AIR COMPRESSOR, LIGHT PLANTS, ARROW BOARDS, AND AIR CURTAIN

2008 ATLAS COPCO XAS185JD7, 185CFM Portable Air Compressor, s/n 8972426053, VIN# 4500A10158R031995, John Deere dsl engine. In good condition.

(2) **WACKER Portable Light Plants**, 3 cylinder dsl engine, e/w (4) lights, manual raise and lower • **2005 GENIE TML Portable Light Plant**, s/n TML05-138 (No Generator)

(2) **TRAFCON TC1-15S Solar Powered Arrow Boards** • **PSI M90C15 Lite Solar Powered Arrow Board**, s/n 05002616 • **VERMAC VM-96L Solar Powered Arrow Board**, s/n 99-032377 (Board Damaged)

2005 CONCEPT PRODUCTS CP4000HD Portable Air Curtain, s/n CP244600680405, 4 cylinder dsl engine.

GENERATORS AND HEAT WAGONS

GENERAC SD45/16251, 45KW Skid Mounted Generator, s/n 0774819, 6 cylinder dsl engine, 56.2KVA, 3-phase, 60Hz, 156 amp. In fair to good condition.

GENERAC SD50/13730, 50KW Skid Mounted Generator, s/n 0711718, 6 cylinder dsl engine, 62.5KVA, 3-phase, 60Hz, 173.4 amp. In fair to good condition.

(2) **HEAT WAGON VG1000, 1,000,000BTU/HR Skid Mounted Heaters**, s/n M4392 & s/n M4633, 240 volt, single phase electric motor

SERVICE AND UTILITY TRUCKS



'00 PETERBILT 330

21,000# rear and 12,000# front axle, 33,000# GVWR, aluminum wheels, work lights, heated mirrors, ac, cruise control, (2) manual stabilizers, and 11R22.5 tires. In good condition with good tires. (180,211 Miles)



2000 PETERBILT 330 Single Axle Service Truck, Cat 3126B dsl engine and Fuller 9 speed transmission, e/w 11'4" service body with work bumper and vise, IMT315A, 7,500# service crane with 10'8" - 21' 10" 3-section crane, Miller Bobcat 225NT gas powered welder, American Eagle SHD-60 hydraulic air compressor, 27" behind cab compartment with (3) lube tanks with diaphragm pumps and hose reels,
'00 PETERBILT 330
21,000# rear and 12,000# front axle, 33,000# GVWR, aluminum wheels, work lights, heated mirrors, ac, cruise control, (2) manual stabilizers, and 11R22.5 tires. In good condition with good tires. (180,211 Miles)
2006 FORD F-550XL Super Duty Utility Truck • **2005 CHEVROLET 3500 Silverado**, 4x4 Crew Cab Utility Truck • **1997 FORD F-250 Heavy Duty Utility Truck** • **1999 FORD F-550 Super Duty Utility/Compressor Truck** • **2004 FORD F-450XL Super Duty Flatbed/Utility Truck**

'06 FORD F-550XL

ROLL-BACK TRUCK AND FLATBED TRUCKS

2000 STERLING L7500 Tandem Axle Roll-Back Truck, Cat 3126 dsl engine and Fuller 9 speed transmission, e/w Jerr-Dan 28' roll-back body, Ramsey winch, 21,000# rears, 12,000# front and 10,000# air lift axle, spring suspension, tow package, 43,000# GVWR, ac, cruise control, and 11R22.5 tires. In good condition with fair to good tires.

1984 INTERNATIONAL 1954 Single Axle Flatbed Truck • **2005 FORD F-550XL Super Duty Flatbed Truck**



'00 STERLING WITH JERR-DAN 28'